

ANCHOR SPACINGS
(BASED ON FTL-2647 INSTALLATION SCREWS & METHOD OF ATTACHMENT:)

- 1.) SILL ANCHOR SPACED AT A MAX. OF 6" FROM EACH END & 18" O.C. MAX.
- 2.) HEAD ANCHOR SPACED AT A MAX. OF 6" FROM EACH END & 18" O.C. MAX.
- 3.) JAMB ANCHOR SPACED AT A MAX. OF 6" FROM EACH END & 13 5/8" O.C. MAX.

TYPICAL ANCHORS: (SEE ELEV. FOR SPACING)

#10 SMS
INTO 2BY WOOD BUCKS OR WOOD STRUCTURE
1-1/4" MIN. PENETRATION INTO WOOD.

3/16" TAPCONS
THRU 1BY WOOD BUCKS INTO MASONRY OR DIRECTLY INTO MASONRY.
1-1/4" MIN. EMBEDMENT INTO MASONRY OR CONCRETE.

#10 SMS
INTO STEEL OR ALUMINUM STRUCTURES (1/8" MIN. THICKNESS).

#10 SMS
INTO APPROVED MULLIONS (NO SHIM SPACE).

- 1.) THIS PRODUCT EVALUATION DOCUMENT (P.E.D.), PREPARED BY THIS ENGINEER IS GENERIC AND DOES NOT PROVIDE INFORMATION FOR A SITE SPECIFIC PROJECT. I.E. WHERE SITE CONDITIONS DEVIATE FROM THIS P.E.D.
- 2.) CONTRACTOR IS RESPONSIBLE FOR THE SELECTION, PURCHASE AND INSTALLATION OF THIS PRODUCT BASED ON THIS PRODUCT EVALUATION PROVIDED HE/SHE DOES NOT DEVIATE FROM THE CONDITIONS DETAILED ON THIS DOCUMENT.
- 3.) THIS PRODUCT EVALUATION DOCUMENT WILL BE CONSIDERED INVALID IF ALTERED BY ANY MEANS.
- 4.) SITE SPECIFIC PROJECTS SHALL BE PREPARED BY A FLORIDA REGISTERED ENGINEER OR ARCHITECT WHICH WILL BECOME THE ENGINEER OF RECORD (E.O.R.) FOR THE PROJECT AND WHO WILL BE RESPONSIBLE FOR THE PROPER USE OF THE P.E.D. ENGINEER OF RECORD, ACTING AS A DELEGATED ENGINEER TO THE P.E.D. ENGINEER SHALL SUBMIT TO THE LATTER THE SITE SPECIFIC DRAWINGS FOR REVIEW.
- 5.) THIS P.E.D. SHALL BEAR THE DATE AND ORIGINAL SEAL AND SIGNATURE OF THE PROFESSIONAL ENGINEER OF RECORD THAT PREPARED IT.

THOMAS J. SOTOS
PROFESSIONAL ENGINEER
FL LIC. # 55225

[Signature]

MAY 07 2003

DATE _____

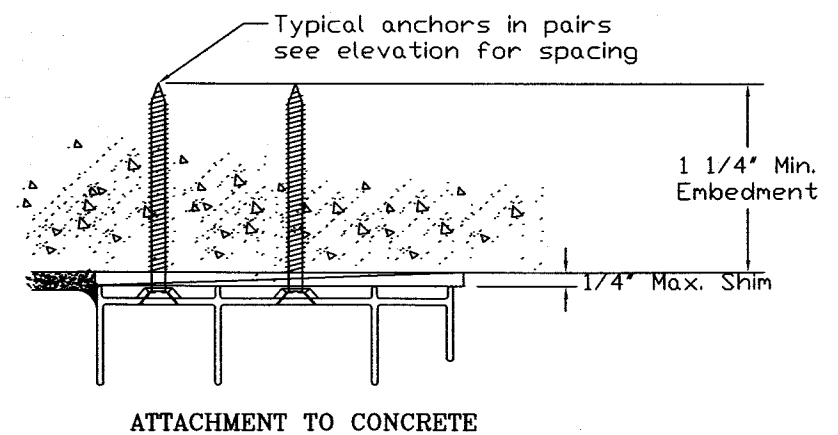
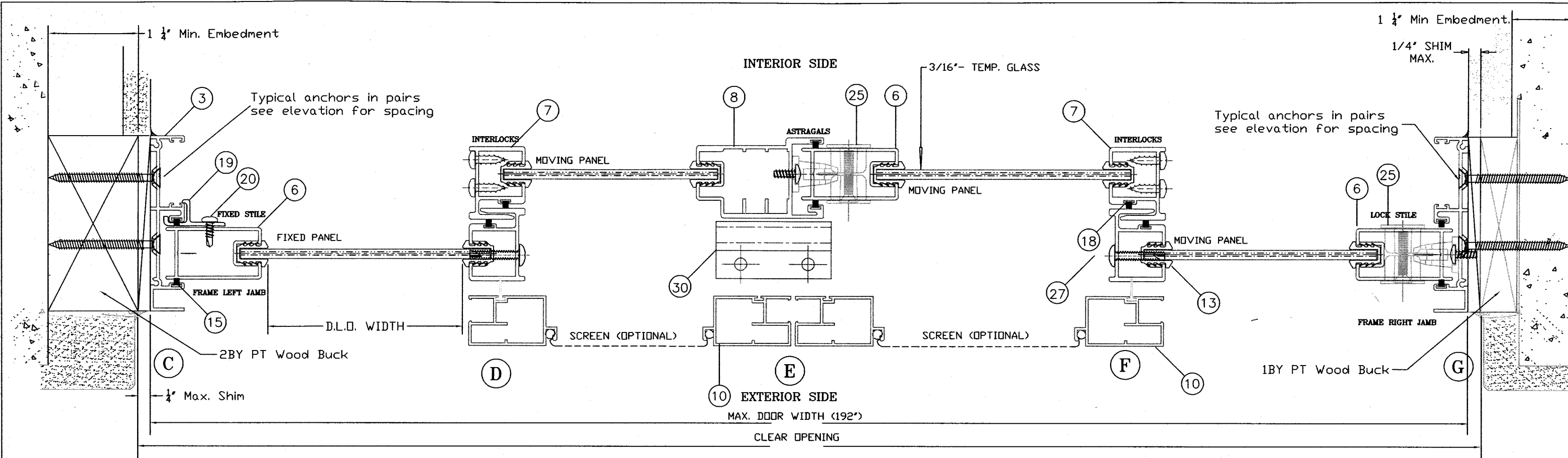
Revision Notes:

Checked By: Nelson Erazo	Date Checked: 5/6/2003
Drawn By: Larry Magee	Date Drawn: 3/19/2003
REFERENCE # FTL-2647	Scale: AS NOTED

LAWSON INDUSTRIES, INC.
www.lawson-industries.com
MANUFACTURER OF QUALITY ALUMINUM WINDOWS AND GLASS DOORS

8501 NW 90th St.
MEDLEY, FLORIDA 33166
(305) 696-8660

Draw Class: LAYOUT	Part Class:	Prod Category: SGD	Series/Model: 410/430	Item: SITE DWG.	Sheet: 1 OF 3
SGD-R30 - SERIES 410/430 SLIDING GLASS DOOR - OXXX ASSEMBLY LAYOUT, INSTALLATION NOTES, DETAILS, TEST PERFORMANCE TEST UNIT-92" W. X 80" H. -3/16" TEMPERED GLASS, FLUSH FRAME					
Drawing Type: SITE SUBMITTAL DRAWINGS			Drawing Number: L-430-001		Revision Level:

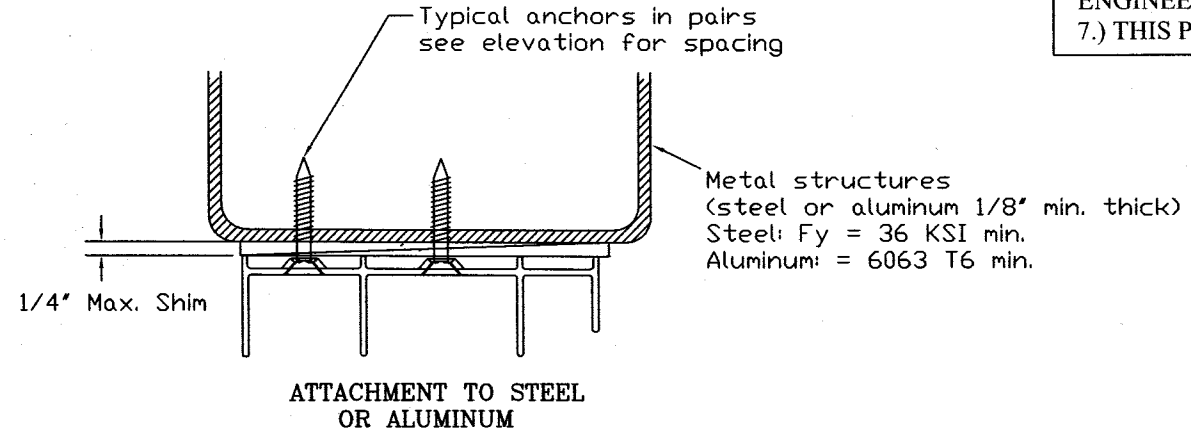


CLADDING PRODUCT COMPLIANCE REVIEW

- 1.) THIS PRODUCT HAS BEEN REVIEWED BY LAWSON INDUSTRIES, TO COMPLY WITH THE REQUIREMENTS OF THE 2001 FLORIDA BUILDING CODE UNDER THE SPECIFIC CONDITIONS SHOWN ON THIS DRAWING.
- 2.) GLASS MEETS REQUIREMENTS OF ASTM E-1300, AS PER CHAPTER 24 OF THE CODE.
- 3.) IN ORDER TO COMPLY WITH ABOVE, THE LOAD CAPACITY FOR THE SIZES SHOWN IN TABLE, MUST MEET OR EXCEED THE LOAD REQUIREMENTS FOR JOB SPECIFIC APPLICATIONS AS PER SECTION 1606 OF THE CODE.
- 4.) A SEALED COPY OF THE TEST REPORT ON WHICH THIS EVALUATION IS BASED IS KEPT IN OUR FILES.
- 5.) P.T. WOOD BUCKS BY OTHERS MUST BE ANCHORED PROPERLY TO TRANSFER LOADS TO THE BUILDING STRUCTURE.
- 6.) ANCHORING CONDITIONS NOT DESCRIBED IN THIS REVIEW ARE TO BE ENGINEERED SEPARATELY.
- 7.) THIS PRODUCT IS NON IMPACT RESISTANT.

		Design Load Capacity - PSF			
Frame Height Nominal Inches	Panel Width Nominal Inches	3/16" Tempered Glass			
		1 1/2" Sill		1 3/4" Sill	
		EXT (+)	EXT (-)	EXT (+)	EXT (-)
80	24	30.0	49.4	40.7	49.4
80	30	30.0	41.4	40.7	41.4
80	36	30.0	36.1	36.1	36.1
80	42	30.0	32.5	32.5	32.5
80	48	30.0	30.0	30.0	30.0
96	24	30.0	30.7	30.7	30.7
96	30	25.0	25.0	25.0	25.0
96	36	21.1	21.1	21.1	21.1

Chart based on test report FTL - 2647
 This approves doors using any number of panels that contain the stile configuration shown on sheet "2" I.E. XX, OX, XO, XXX, OXO, OXXO.



THOMAS J. SOTOS
 PROFESSIONAL ENGINEER
 FL LIC. # 55225

[Signature]

MAY 07 2003

DATE

Revision Notes:

Checked By: Nelson Erazo	Date Checked: 5/6/2003
Drawn By: Larry Magee	Date Drawn: 3/19/2003
REFERENCE # FTL-2647	Scale: AS NOTED

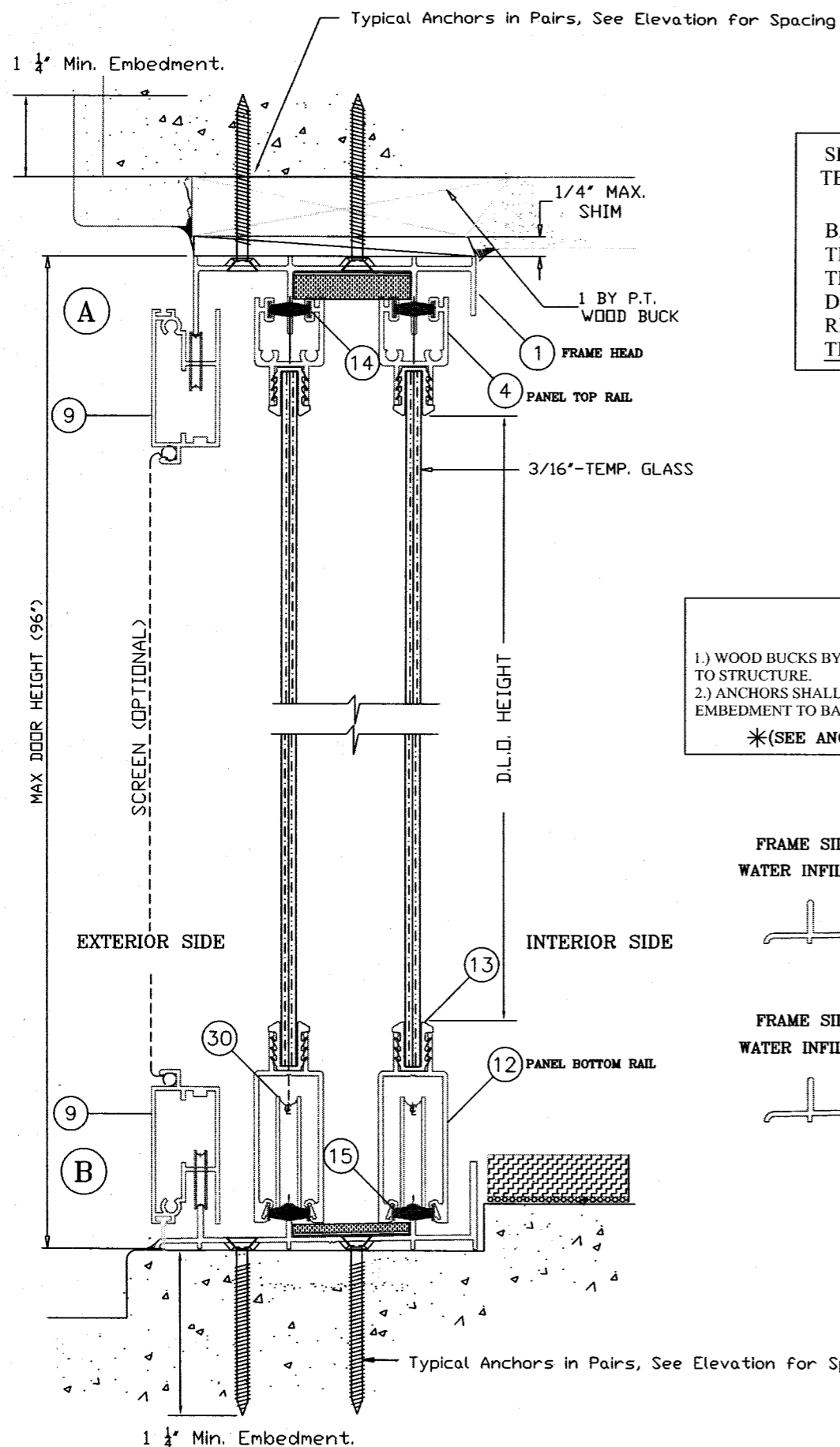
LAWSON INDUSTRIES, INC.

www.lawson-industries.com

8501 NW 90th St.
 MEDLEY, FLORIDA 33166
 (305) 696-8660

MANUFACTURER OF QUALITY ALUMINUM WINDOWS AND GLASS DOORS

Draw Class: LAYOUT	Part Class:	Prod Category: SGD	Series/Model: 410/430	Item: SITE DWG.	Sheet: 2 OF 3
SGD-R30 - SERIES 410/430 SLIDING GLASS DOOR - OXXX					
ASSEMBLY LAYOUT, INSTALLATION NOTES, DETAILS, TEST PERFORMANCE					
TEST UNIT-92" W. X 80" H. -3/16" TEMPERED GLASS, FLUSH FRAME					
Drawing Type: SITE SUBMITTAL DRAWINGS	Drawing Number: L-430-001		Revision Level:		

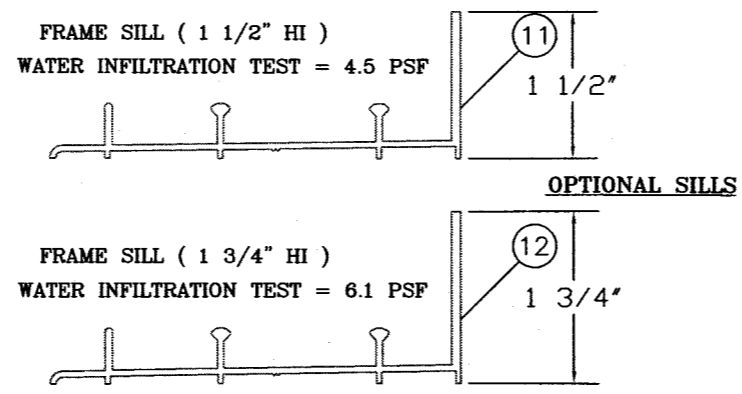


**SERIES 410/430 SLIDING GLASS DOOR
TEST UNIT PERFORMANCE SUMMARY
UNIT A-3**

BASED ON FTL - 2647 (SGD-R30)
TEST SIZE = 192" X 80" (OXXX)
TEST LOADS = +45.0 -45.0 PSF
DESIGN LOADS = +30.0 -30.0 PSF
REINFORCEMENT: NONE
TESTED GLASS = 3/16" TEMPERED

ANCHOR NOTES

1.) WOOD BUCKS BY OTHER'S MUST BE ANCHORED PROPERLY TO TRANSFER LOADS TO STRUCTURE.
2.) ANCHORS SHALL BE AS LISTED, SPACED AS SHOWN ON DETAILS, ANCHOR EMBEDMENT TO BASE MATERIAL SHALL BE BEYOND WALL DRESSING OR STUCCO.
*(SEE ANCHOR TYPES & SPACINGS @ SHEET 1 OF 3)



SERIES SGD-410/430 SLIDING GLASS DOOR - BILL OF MATERIALS					
ITEM #	DRW'G #	PART #	REQD.	DESCRIPTION	REMARKS
1	L-9001	LAW-10	1	FRAME HEAD	6063-T5 ALUM.
2	*	*	*	*	*
3	L-9003	LAW-11	2	FRAME JAMB	6063-T5 ALUM.
4	L-9004	LAW-7	4	PANEL TOP RAIL	6063-T5 ALUM.
5	L-9005	LAW-6	4	PANEL BOTTOM RAIL	6063-T5 ALUM.
6	L-4106	AF-10398	3	LOCK STILE / FIXED STILE	6063-T6 ALUM.
7	L-4107	AF-10402	4	INTERLOCK STILE	6063-T6 ALUM.
8	L-4108	AF-10409	1	ASTRAGAL STILE	6063-T6 ALUM.
9	L-9009	DD 280	2/ panel	SCREEN TOP & BOTT. RAIL	6063-T5 ALUM.
10	L-9010	DD 276	2/ panel	SCREEN VERTICAL STILES	6063-T5 ALUM.
11	L-4102	AF-	1	FRAME SILL - 1 1/2' HI	6063-T5 ALUM.
12	L-9002	LAW-5	1	FRAME SILL - 1 3/4' HI	6063-T5 ALUM.
13	L-9041	GV-001	AS REQD.	3/16" VINYL GLAZING CHANNEL	#750 (TEAM PLASTICS CO.)
14	L-9019	P-7003G	AS REQD.	SELF ADHESIVE PILE PADS	(.810"x.700"x1.50")-UltraFab
15	L-4015	7519-6001-7	AS REQD.	PILE WTS'P. @ JAMB/ASTRAGAL	(.187"w. x 0.200"h.)-Schlegel
16	L-4016	7524-6001-6	AS REQD.	PILE WTS'P. @ TOP RAILS	(.187"w. x 0.250"h.)-Schlegel
17	L-4017	7529-6001-7	AS REQD.	PILE WTS'P. @ BOTTOM RAILS	(.187"w. x 0.300"h.)-Schlegel
18	L-4018	7520-5001-7	AS REQD.	PILE WTS'P. @ INTERLOCKS	(.187"w. x 0.210"h.)-Schlegel
19	L-9018	AR-003	2	FIXED PANEL JAMB CLIP	GW-27153/6063-T5 ALUM.
20	L-9021	FS-029	2	FXD. PANEL CLIP SCREW	#8 X 5/8' PH.-PHI / SDS
21	L-4022	*	*	FIXED INTERLOCK ANGLE/ALUM.	*
22	L-9022	*	(1)	ASTRAGAL RETAINER CLIP	ATTACHED W/SAME SILL ANCHORS
23	L-9032	1071a	2/ panel	PANEL TOP GUIDE	Nylon
24	L-9033	1072a	2/ panel	PANEL BOTTOM GUIDE	Nylon
25	L-4039	HC-038	AS REQ'D.	DOOR LOCK ASSEMBLY	INT.&EXT. PULLS, CAM, KEEPER
26	L-4031	FS-011	4/ panel	Panel ASS'Y SCREW @ Top Rail	#10 x 5/8' P.H. - PHILLIPS
27	L-4032	FS-034	2/ panel	Panel ASS'Y SCREW @ Bot Rail	#10-24 X 1' P.H.-PHIL./ 'T'
28	L-4033	FS-028	8	Frame ASSEMBLY SCREW	#8 X 7/16' P.H.-PHIL. / SMS
29	L-4034	FS-014	AS REQD.	Frame INSTALLATION SCREW	SEE ANCHOR NOTES
30	L-9034.1	HW4-WHL	2/ panel	PANEL SINGLE ROLLER	6 COMPONENT - ASS'Y 150
31	L-4037	*	1	MANUFACTURER'S LABEL	LOCATED AT FRAME JAMB

THOMAS J. SOTOS
PROFESSIONAL ENGINEER
FL LIC. # 55225

[Signature]

MAY 07 2003

DATE

Revision Notes:

Checked By: Nelson Erazo Date Checked: 5/6/2003

Drawn By: Larry Magee Date Drawn: 3/19/2003

REFERENCE # FTL-2647 Scale: AS NOTED

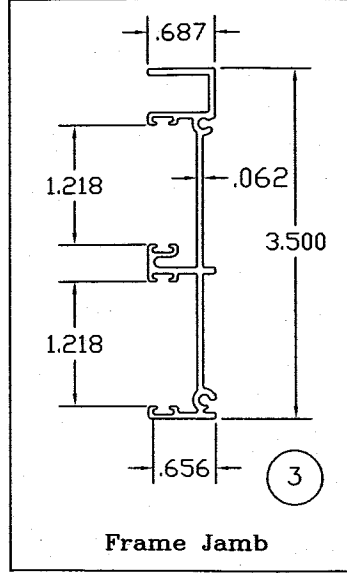
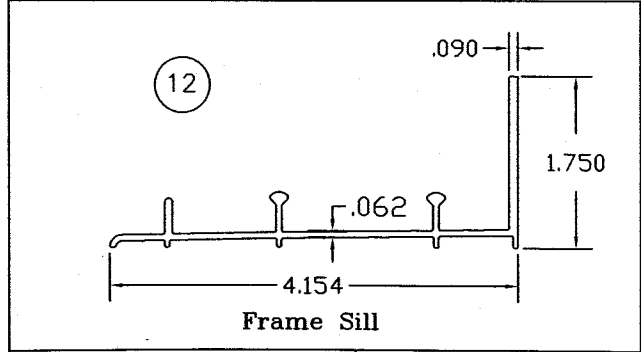
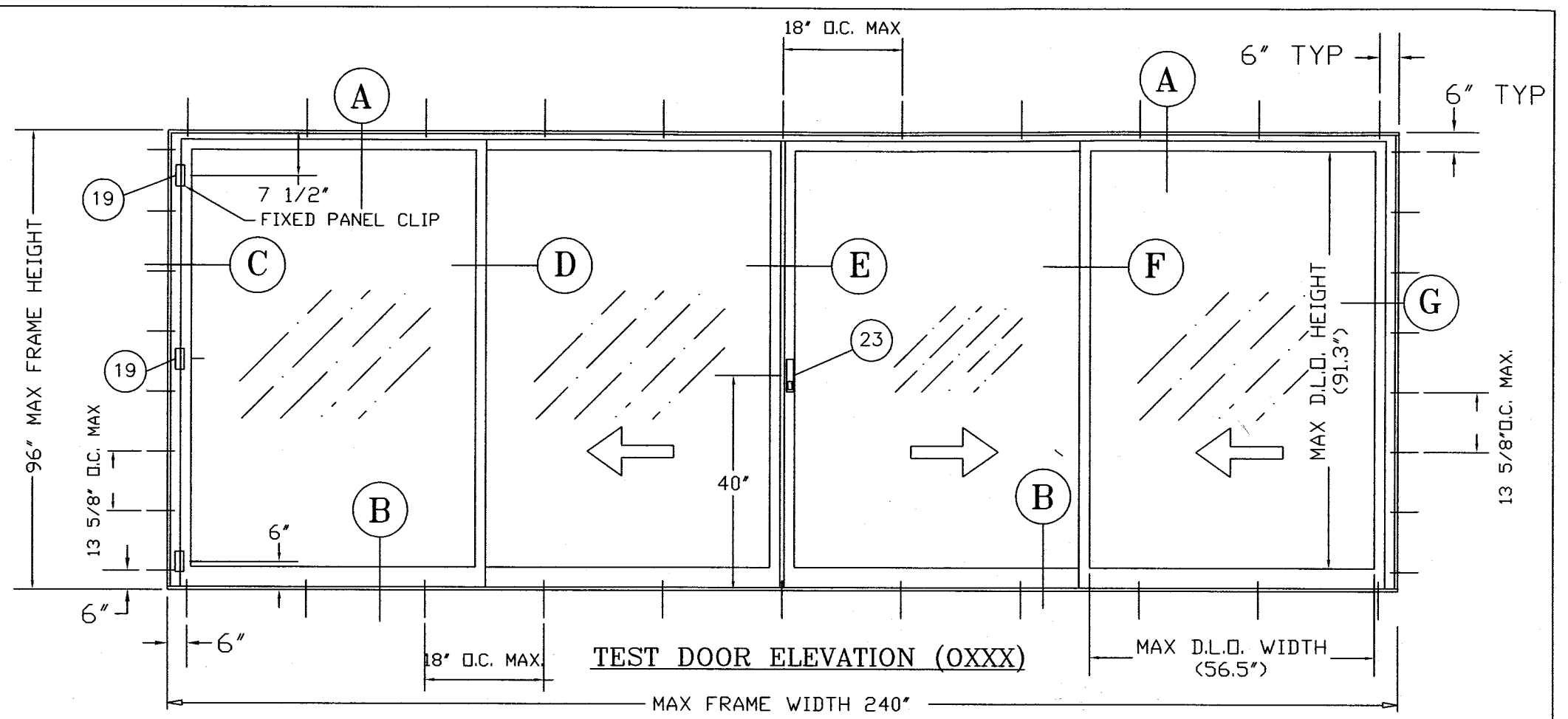
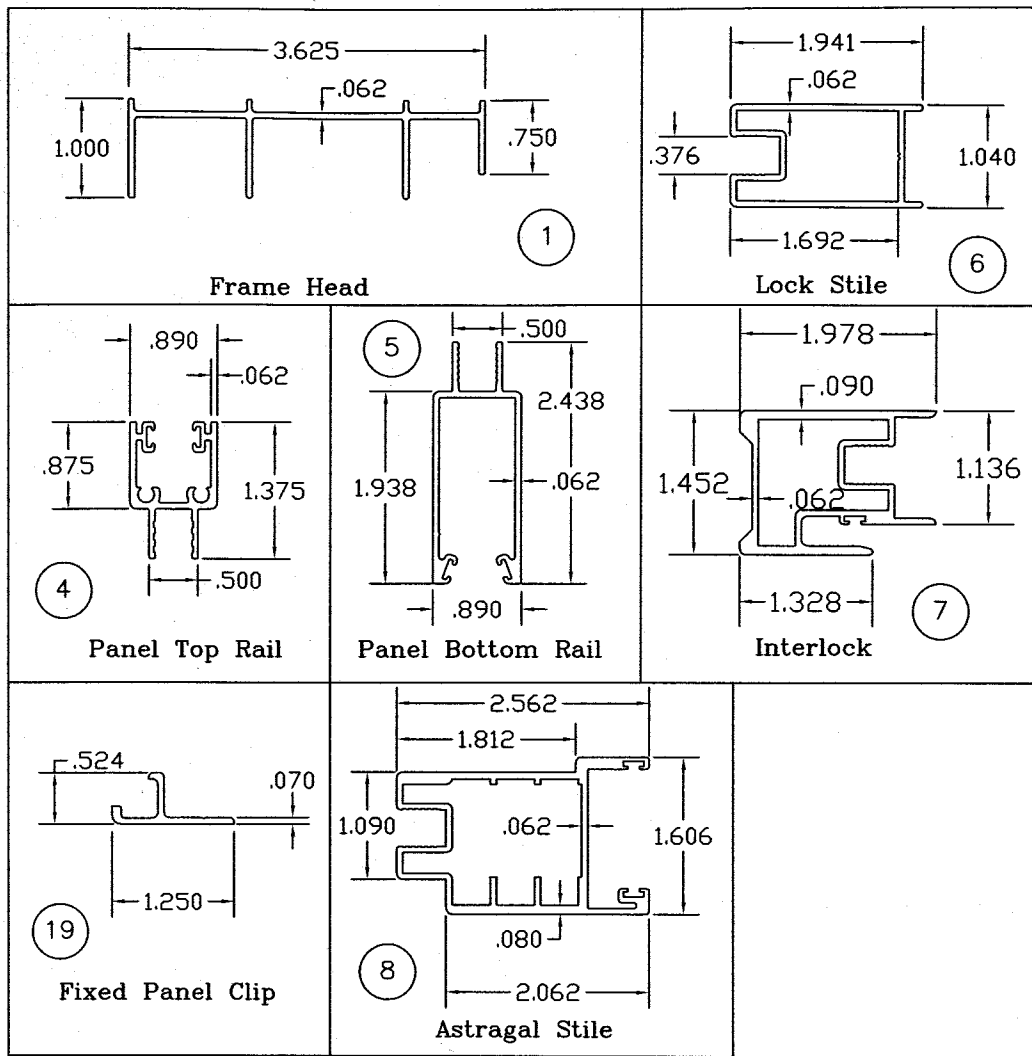
LAWSON INDUSTRIES, INC.
www.lawson-industries.com
MANUFACTURER OF QUALITY ALUMINUM WINDOWS AND GLASS DOORS

8501 NW 90th St.
MEDLEY, FLORIDA 33166
(305) 696-8660

Draw Class: LAYOUT	Part Class:	Prod Category: SGD	Series/Model: 410/430	Item: SITE DWG.	Sheet: 3 OF 3
--------------------	-------------	--------------------	-----------------------	-----------------	---------------

SGD-R30 - SERIES 410/430 SLIDING GLASS DOOR - OXXX
ASSEMBLY LAYOUT, INSTALLATION NOTES, DETAILS, TEST PERFORMANCE
TEST UNIT-92" W. X 80" H. -3/16" TEMPERED GLASS, FLUSH FRAME

Drawing Type: SITE SUBMITTAL DRAWINGS	Drawing Number: L-430-001	Revision Level:
---------------------------------------	---------------------------	-----------------



ANCHOR SPACINGS
(BASED ON FTL-2772 INSTALLATION SCREWS & METHOD OF ATTACHMENT:)

- 1.) SILL ANCHOR SPACED AT A MAX. OF 6" FROM EACH END & 18" O.C. MAX.
- 2.) HEAD ANCHOR SPACED AT A MAX. OF 6" FROM EACH END & 18" O.C. MAX.
- 3.) JAMB ANCHOR SPACED AT A MAX. OF 6" FROM EACH END & 13 5/8" O.C. MAX.

TYPICAL ANCHORS: (SEE ELEV. FOR SPACING)

#10 SMS
INTO 2BY WOOD BUCKS OR WOOD STRUCTURE
1-1/4" MIN. PENETRATION INTO WOOD.

3/16" TAPCONS
THRU 1BY WOOD BUCKS INTO MASONRY OR DIRECTLY INTO MASONRY.
1-1/4" MIN. EMBEDMENT INTO MASONRY OR CONCRETE.

#10 SMS
INTO STEEL OR ALUMINUM STRUCTURES (1/8" MIN. THICKNESS).

#10 SMS
INTO APPROVED MULLIONS (NO SHIM SPACE).

- 1.) THIS PRODUCT EVALUATION DOCUMENT (P.E.D.), PREPARED BY THIS ENGINEER IS GENERIC AND DOES NOT PROVIDE INFORMATION FOR A SITE SPECIFIC PROJECT. I.E. WHERE SITE CONDITIONS DEVIATE FROM THIS P.E.D.
- 2.) CONTRACTOR IS RESPONSIBLE FOR THE SELECTION, PURCHASE AND INSTALLATION OF THIS PRODUCT BASED ON THIS PRODUCT EVALUATION PROVIDED HE/SHE DOES NOT DEVIATE FROM THE CONDITIONS DETAILED ON THIS DOCUMENT.
- 3.) THIS PRODUCT EVALUATION DOCUMENT WILL BE CONSIDERED INVALID IF ALTERED BY ANY MEANS.
- 4.) SITE SPECIFIC PROJECTS SHALL BE PREPARED BY A FLORIDA REGISTERED ENGINEER OR ARCHITECT WHICH WILL BECOME THE ENGINEER OF RECORD (E.O.R.) FOR THE PROJECT AND WHO WILL BE RESPONSIBLE FOR THE PROPER USE OF THE P.E.D. ENGINEER OF RECORD, ACTING AS A DELEGATED ENGINEER TO THE P.E.D. ENGINEER SHALL SUBMIT TO THE LATTER THE SITE SPECIFIC DRAWINGS FOR REVIEW.
- 5.) THIS P.E.D. SHALL BEAR THE DATE AND ORIGINAL SEAL AND SIGNATURE OF THE PROFESSIONAL ENGINEER OF RECORD THAT PREPARED IT.

THOMAS J. SOTOS
PROFESSIONAL ENGINEER
FL LIC. # 55225

[Signature]

MAY 07 2003

DATE MAY 07 2003

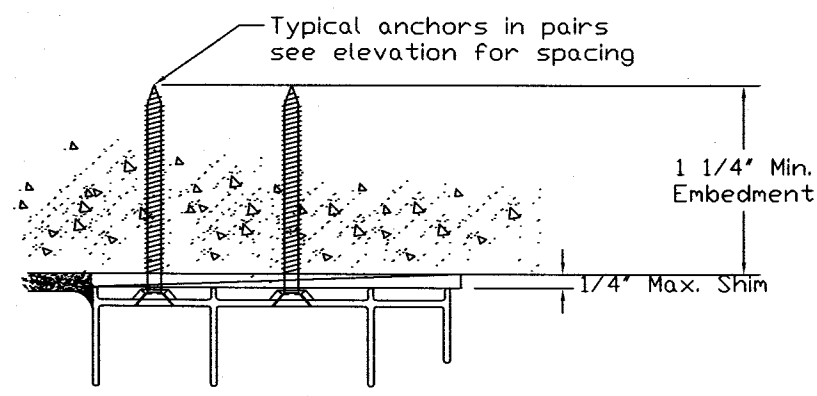
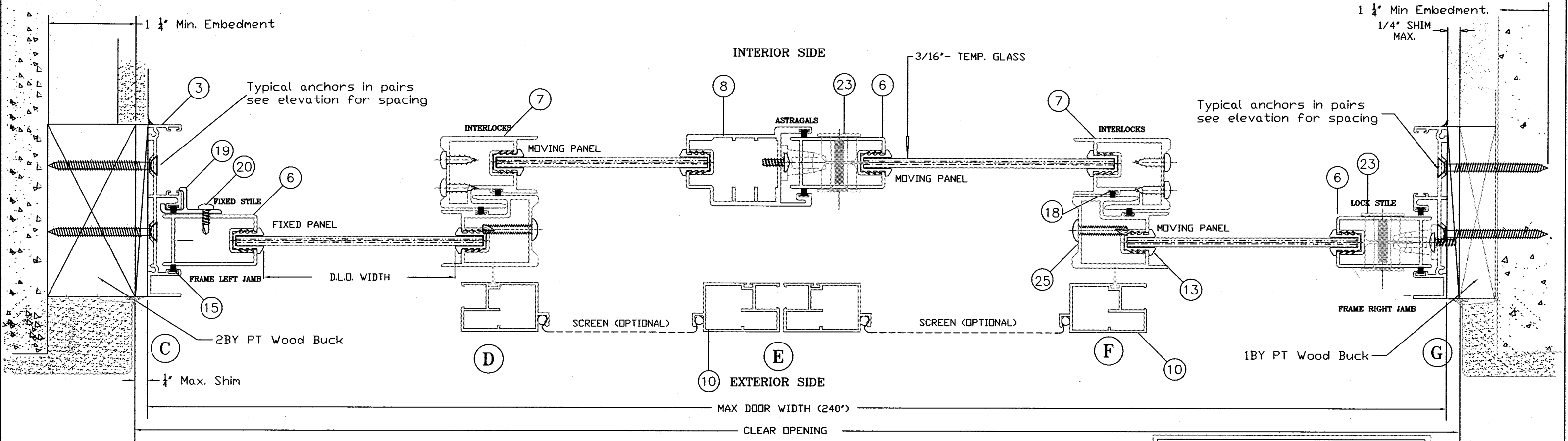
Revision Notes:

Checked By: Nelson Erazo	Date Checked: 5/6/2003
Drawn By: Larry Magee	Date Drawn: 3/19/2003
Reference # FTL-2772	Scale: AS NOTED

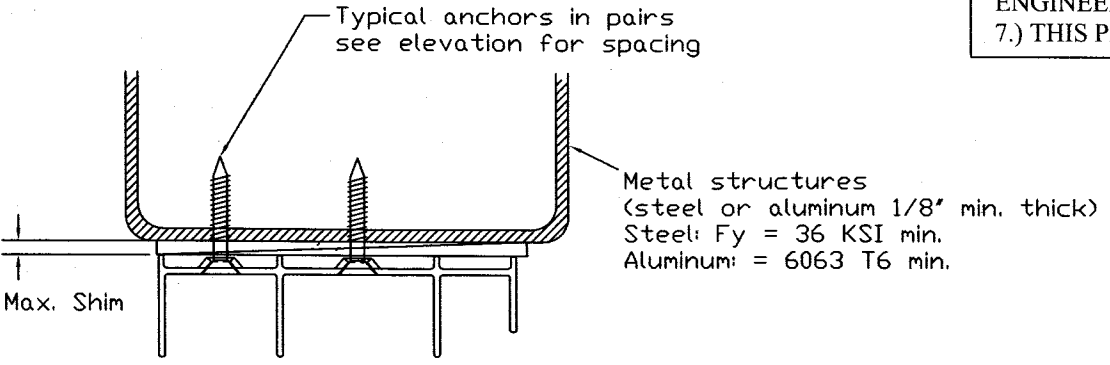
LAWSON INDUSTRIES, INC.
www.lawson-industries.com
MANUFACTURER OF QUALITY ALUMINUM WINDOWS AND GLASS DOORS

8501 NW 90th St.
MEDLEY, FLORIDA 33166
(305) 696-8660

Draw Class: LAYOUT	Part Class:	Prod Category: SGD	Series/Model: 450/470	Item: SITE DWG.	Sheet: 1 OF 3
SGD-C20 - SERIES 450/470 SLIDING GLASS DOOR - OXXX ASSEMBLY LAYOUT, INSTALLATION NOTES, DETAILS, TEST PERFORMANCE TEST UNIT-240" W. X 96" H. -3/16" TEMPERED GLASS, FLUSH FRAME					
Drawing Type: SITE SUBMITTAL DRAWINGS				Drawing Number: L-470-001	Revision Level:



ATTACHMENT TO CONCRETE



ATTACHMENT TO STEEL OR ALUMINUM

CLADDING PRODUCT COMPLIANCE REVIEW

1.) THIS PRODUCT HAS BEEN REVIEWED BY LAWSON INDUSTRIES, TO COMPLY WITH THE REQUIREMENTS OF THE 2001 FLORIDA BUILDING CODE UNDER THE SPECIFIC CONDITIONS SHOWN ON THIS DRAWING.

2.) GLASS MEETS REQUIREMENTS OF ASTM E-1300, AS PER CHAPTER 24 OF THE CODE.

3.) IN ORDER TO COMPLY WITH ABOVE, THE LOAD CAPACITY FOR THE SIZES SHOWN IN TABLE, MUST MEET OR EXCEED THE LOAD REQUIREMENTS FOR JOB SPECIFIC APPLICATIONS AS PER SECTION 1606 OF THE CODE.

4.) A SEALED COPY OF THE TEST REPORT ON WHICH THIS EVALUATION IS BASED IS KEPT IN OUR FILES.

5.) P.T. WOOD BUCKS BY OTHERS MUST BE ANCHORED PROPERLY TO TRANSFER LOADS TO THE BUILDING STRUCTURE.

6.) ANCHORING CONDITIONS NOT DESCRIBED IN THIS REVIEW ARE TO BE ENGINEERED SEPARATELY.

7.) THIS PRODUCT IS NON IMPACT RESISTANT.

Design Load Capacity - PSF

Frame Height Nominal Inches	Panel Width Nominal Inches	3/16" Tempered Glass 1 3/4" Sill	
		EXT (+)	EXT (-)
80	30	40.6	40.6
80	36	35.5	35.5
80	42	31.9	31.9
80	48	29.5	29.5
80	54	27.7	27.7
80	60	26.4	26.4
96	30	32.6	32.6
96	36	28.2	28.2
96	42	25.1	25.1
96	48	22.9	22.9
96	54	21.2	21.2
96	60	20	20

Chart based on test report FTL - 2772
This approves doors using any number of panels that contain the stile configuration shown on sheet "2".
I.E. XX, OX, XO, XXX, OXO, OXXO.

THOMAS J. SOTOS
PROFESSIONAL ENGINEER
FL LIC. # 55225

[Signature]

DATE **MAY 07 2003**

Revision Notes:

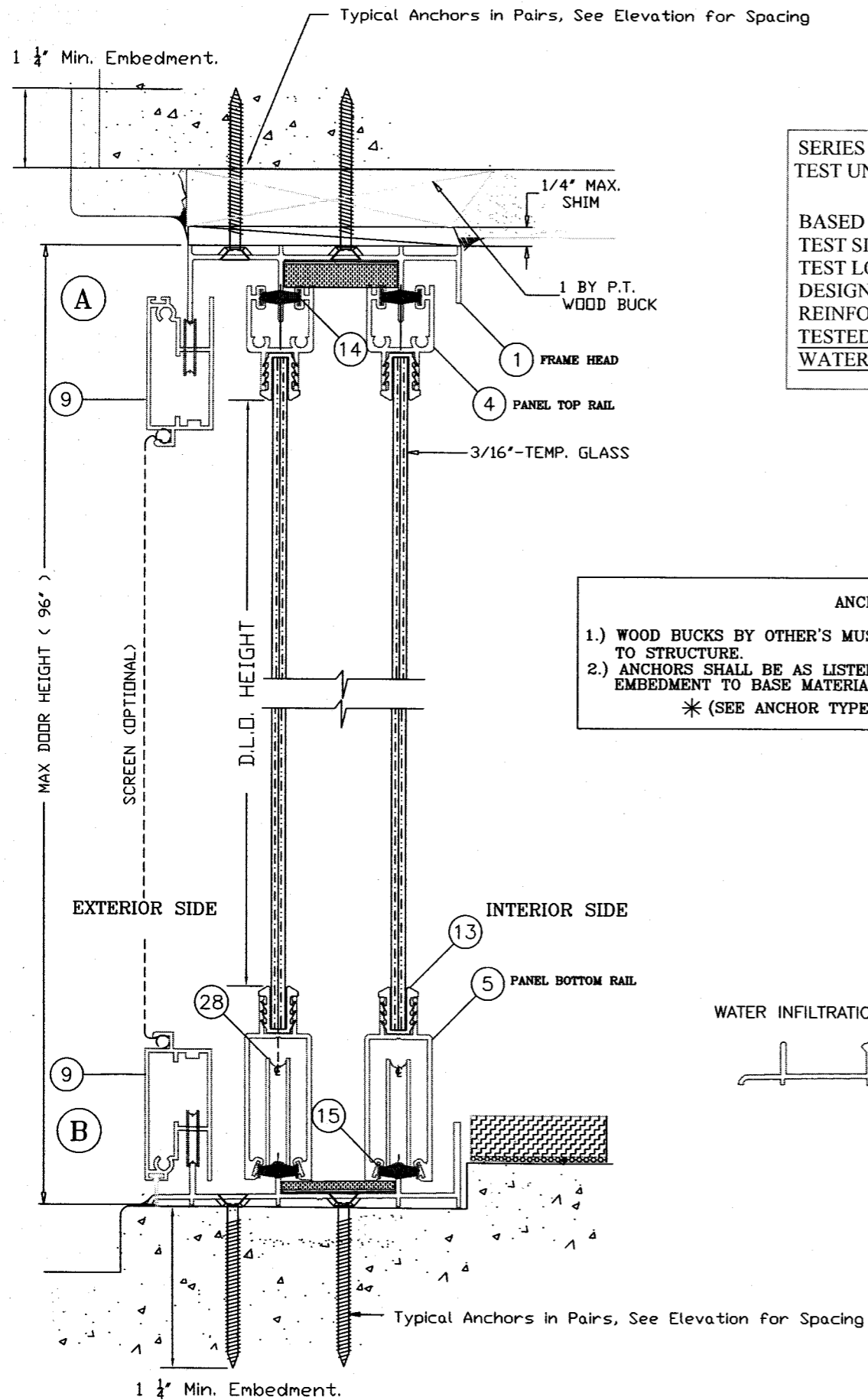
Checked By: Nelson Erazo	Date Checked: 5/6/2003
Drawn By: Larry Magee	Date Drawn: 3/19/2003
Reference # FTL-2772	Scale: AS NOTED

LAWSON INDUSTRIES, INC.
www.lawson-industries.com

8501 NW 90th St.
MEDLEY, FLORIDA 33166
(305) 696-8660

MANUFACTURER OF QUALITY ALUMINUM WINDOWS AND GLASS DOORS

Draw Class: LAYOUT	Part Class: SGD	Prod Category: SGD	Series/Model: 450/470	Item: SITE DWG.	Sheet: 2 OF 3
SGD-C20 - SERIES 450/470 SLIDING GLASS DOOR - OXXX ASSEMBLY LAYOUT, INSTALLATION NOTES, DETAILS, TEST PERFORMANCE TEST UNIT-240" W. X 96" H. -3/16" TEMPERED GLASS, FLUSH FRAME					
Drawing Type: SITE SUBMITTAL DRAWINGS			Drawing Number: L-470-001		Revision Level:

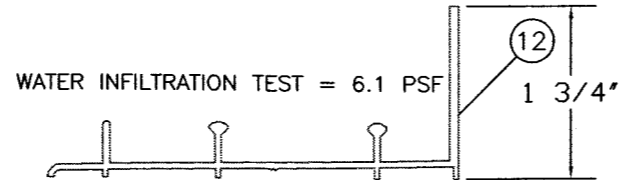


**SERIES 450/470 SLIDING GLASS DOOR
TEST UNIT PERFORMANCE SUMMARY
UNIT A-1**

BASED ON FTL - 2772 (SGD-C20)
TEST SIZE = 240" X 96" (OXXX)
TEST LOADS = +30.0 -30.0 PSF
DESIGN LOADS = +20.0 -20.0 PSF
REINFORCEMENT: NONE
TESTED GLASS = 3/16" TEMPERED
WATER INFILTRATION TEST = 6.1 PSF

ANCHOR NOTES

1.) WOOD BUCKS BY OTHER'S MUST BE ANCHORED PROPERLY TO TRANSFER LOADS TO STRUCTURE.
2.) ANCHORS SHALL BE AS LISTED, SPACED AS SHOWN ON DETAILS, ANCHOR EMBEDMENT TO BASE MATERIAL SHALL BE BEYOND WALL DRESSING OR STUCCO.
* (SEE ANCHOR TYPES & SPACINGS @ SHEET 1 OF 3)



SERIES SGD-410/430 SLIDING GLASS DOOR - BILL OF MATERIALS					
ITEM #	DRW'G #	PART #	REQD.	DESCRIPTION	REMARKS
1	L-9001	LAW-10	1	FRAME HEAD	6063-T5 ALUM.
2	*	*	*	*	*
3	L-9003	LAW-11	2	FRAME JAMB	6063-T5 ALUM.
4	L-9004	LAW-7	4	PANEL TOP RAIL	6063-T5 ALUM.
5	L-9005	LAW-6	4	PANEL BOTTOM RAIL	6063-T5 ALUM.
6	L-4106	AF-10398	3	LOCK STILE / FIXED STILE	6063-T6 ALUM.
7	L-4107	AF-10402	4	INTERLOCK STILE	6063-T6 ALUM.
8	L-4108	AF-10409	1	ASTRAGAL STILE	6063-T6 ALUM.
9	L-9009	DD 280	2/ panel	SCREEN TOP & BOTT. RAIL	6063-T5 ALUM.
10	L-9010	DD 276	2/ panel	SCREEN VERTICAL STILES	6063-T5 ALUM.
11	*	*	*	*	*
12	L-9002	LAW-5	1	FRAME SILL - 1 3/4" HI	6063-T5 ALUM.
13	L-9041	GV-001	AS REQD.	3/16" VINYL GLAZING CHANNEL	#750 (TEAM PLASTICS CO.)
14	L-9019	P-7003G	AS REQD.	SELF ADHESIVE PILE PADS	(.810"x.700"x1.50")-Ultrafab
15	L-4015	7519-6001-7	AS REQD.	PILE WTS'P. @ JAMB/ASTRAGAL	(0.187"w. x 0.200"h.)-Schlegel
16	L-4016	7524-6001-6	AS REQD.	PILE WTS'P. @ TOP RAILS	(0.187"w. x 0.250"h.)-Schlegel
17	L-4017	7529-6001-7	AS REQD.	PILE WTS'P. @ BOTTOM RAILS	(0.187"w. x 0.300"h.)-Schlegel
18	L-4018	7520-5001-7	AS REQD.	PILE WTS'P. @ INTERLOCKS	(0.187"w. x 0.210"h.)-Schlegel
19	L-9018	AR-003	3	FIXED PANEL JAMB CLIP	GW-27153/6063-T5 ALUM.
20	L-9021	FS-029	3	FXD. PANEL CLIP SCREW	#8 X 5/8" PH.-PHI / SDS
21	L-9032	1071a	2/ panel	PANEL TOP GUIDE	Nylon
22	L-9033	1072a	2/ panel	PANEL BOTTOM GUIDE	Nylon
23	L-4039	HC-038	AS REQ'D.	DOOR LOCK ASSEMBLY	INT.&EXT. PULLS, CAM, KEEPER
24	L-4031	FS-011	4/ panel	Panel ASS'Y SCREW @ Top Rail	#10 x 5/8" P.H. - PHILLIPS
25	L-4032	FS-034	2/ panel	Panel ASS'Y SCREW @ Bot Rail	#10-24 X 1" P.H.-PHIL./ "T"
26	L-4033	FS-028	8	Frame ASSEMBLY SCREW	#8 X 7/16" P.H.-PHIL. / SMS
27	L-4034	FS-014	AS REQD.	Frame INSTALLATION SCREW	* SEE ANCHOR NOTES
28	L-9034.1	HW4-WHL	2/ panel	PANEL SINGLE ROLLER	6 COMPONENT - ASS'Y 150
29	L-4037	*	1	MANUFACTURER'S LABEL	LOCATED AT FRAME JAMB

THOMAS J. SOTOS
PROFESSIONAL ENGINEER
FL LIC. # 55225

DATE MAY 07 2003

Revision Notes:

Checked By: Nelson Erazo	Date Checked: 5/6/2003
Drawn By: Larry Magee	Date Drawn: 3/19/2003
Reference # FTL-2772	Scale: AS NOTED

LAWSON
INDUSTRIES, INC.
www.lawson-industries.com

8501 NW 90th St.
MEDLEY, FLORIDA 33166
(305) 696-8660

MANUFACTURER OF QUALITY ALUMINUM WINDOWS AND GLASS DOORS

Draw Class: LAYOUT	Part Class:	Prod Category: SGD	Series/Model: 450/470	Item: SITE DWG.	Sheet: 3 OF 3
SGD-C20 - SERIES 450/470 SLIDING GLASS DOOR - OXXX ASSEMBLY LAYOUT, INSTALLATION NOTES, DETAILS, TEST PERFORMANCE TEST UNIT-240" W. X 96" H. -3/16" TEMPERED GLASS, FLUSH FRAME					
Drawing Type: SITE SUBMITTAL DRAWINGS			Drawing Number: L-470-001		Revision Level: