



BUILDING CODE COMPLIANCE OFFICE (BCCO)
PRODUCT CONTROL DIVISION

MIAMI-DADE COUNTY, FLORIDA
METRO-DADE FLAGLER BUILDING
140 WEST FLAGLER STREET, SUITE 1603
MIAMI, FLORIDA 33130-1563
(305) 375-2901 FAX (305) 375-2908

NOTICE OF ACCEPTANCE (NOA)

www.buldingcodeonline.com

Lawson Industries, Inc.
8501 NW 90th Street
Medley, FL 33166

SCOPE:

This NOA is being issued under the applicable rules and regulations governing the use of construction materials. The documentation submitted has been reviewed by Miami-Dade County Product Control Division and accepted by the Board of Rules and Appeals (BORA) to be used in Miami Dade County and other areas where allowed by the Authority Having Jurisdiction (AHJ).

This NOA shall not be valid after the expiration date stated below. The Miami-Dade County Product Control Division (In Miami Dade County) and/or the AHJ (in areas other than Miami Dade County) reserve the right to have this product or material tested for quality assurance purposes. If this product or material fails to perform in the accepted manner, the manufacturer will incur the expense of such testing and the AHJ may immediately revoke, modify, or suspend the use of such product or material within their jurisdiction. BORA reserves the right to revoke this acceptance, if it is determined by Miami-Dade County Product Control Division that this product or material fails to meet the requirements of the applicable building code.

This product is approved as described herein, and has been designed to comply with the Florida Building Code, including the High Velocity Hurricane Zone.

DESCRIPTION: Series 3000 Outswing Aluminum Casement Window – N.I.

APPROVAL DOCUMENT: Drawing No. **L3000-0701-001**, titled "Series 3000 Outswing Aluminum Casement Window", sheets 1 through 10 of 10, dated 10/27/07, prepared by manufacturer, signed and sealed by Thomas J. Sotos, P.E., bearing the Miami-Dade County Product Control Approval stamp with the Notice of Acceptance number and approval date by the Miami-Dade County Product Control Division.

MISSILE IMPACT RATING: None

LABELING: Each unit shall bear a permanent label with the manufacturer's name or logo, city, state and following statement: "Miami-Dade County Product Control Approved", unless otherwise noted herein.

RENEWAL of this NOA shall be considered after a renewal application has been filed and there has been no change in the applicable building code negatively affecting the performance of this product.

TERMINATION of this NOA will occur after the expiration date or if there has been a revision or change in the materials, use, and/or manufacture of the product or process. Misuse of this NOA as an endorsement of any product, for sales, advertising or any other purposes shall automatically terminate this NOA. Failure to comply with any section of this NOA shall be cause for termination and removal of NOA.

ADVERTISEMENT: The NOA number preceded by the words Miami-Dade County, Florida, and followed by the expiration date may be displayed in advertising literature. If any portion of the NOA is displayed, then it shall be done in its entirety.

INSPECTION: A copy of this entire NOA shall be provided to the user by the manufacturer or its distributors and shall be available for inspection at the job site at the request of the Building Official. This NOA consists of this page 1 and evidence pages E-1, E-2 and E-3, as well as approval document mentioned above.

The submitted documentation was reviewed by **Manuel Perez, P.E.**



NOA No. 07-1218.08
Expiration Date: June 12, 2013
Approval Date: June 12, 2008
Page 1

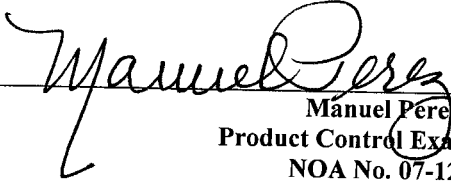
NOTICE OF ACCEPTANCE: EVIDENCE SUBMITTED

A. DRAWINGS

1. Manufacturer's die drawings and sections.
2. Drawing No. **L3000-0701.001**, Sheets 1 through 10 of 10, titled "Series 3000 Outswing Aluminum Casement Window", dated 10/27/07, prepared by manufacturer, signed and sealed by Thomas J. Sotos, P.E.

B. TESTS

1. Test reports on: 1) Uniform Static Air Pressure Test, Loading per FBC TAS 202-94 along with marked-up drawings and installation diagram of a series 3000 outswing aluminum casement window, X configuration, w/1/4" ann. glass, prepared by Hurricane Engineering & Testing, Inc., Test Report No. **HETI-07-4207A**, dated 07/10/07, signed and sealed by Candido F. Font, P.E.
2. Test reports on: 1) Uniform Static Air Pressure Test, Loading per FBC TAS 202-94 along with marked-up drawings and installation diagram of a series 3000 outswing aluminum casement window, X configuration, w/3/16" ann. glass, prepared by Hurricane Engineering & Testing, Inc., Test Report No. **HETI-07-4207B**, dated 07/10/07, signed and sealed by Candido F. Font, P.E.
3. Test reports on: 1) Uniform Static Air Pressure Test, Loading per FBC TAS 202-94 along with marked-up drawings and installation diagram of a series 3000 outswing aluminum casement window, X configuration, w/3/16" temp. glass, prepared by Hurricane Engineering & Testing, Inc., Test Report No. **HETI-07-4207C**, dated 07/10/07, signed and sealed by Candido F. Font, P.E.
4. Test reports on: 1) Uniform Static Air Pressure Test, Loading per FBC TAS 202-94 along with marked-up drawings and installation diagram of a series 3000 outswing aluminum casement window, XX configuration, w/1/4" ann. glass, prepared by Hurricane Engineering & Testing, Inc., Test Report No. **HETI-07-4207D**, dated 07/10/07, signed and sealed by Candido F. Font, P.E.
5. Test reports on: 1) Uniform Static Air Pressure Test, Loading per FBC TAS 202-94 along with marked-up drawings and installation diagram of a series 3000 outswing aluminum casement, XX configuration, w/3/16" ann. glass, prepared by Hurricane Engineering & Testing, Inc., Test Report No. **HETI-07-4207E**, dated 07/10/07, signed and sealed by Candido F. Font, P.E.
6. Test reports on: 1) Uniform Static Air Pressure Test, Loading per FBC TAS 202-94 along with marked-up drawings and installation diagram of a series 3000 outswing aluminum casement window with center fixed vent, XOX-UE configuration, w/3/16" ann. glass, prepared by Hurricane Engineering & Testing, Inc., Test Report No. **HETI-07-4207F**, dated 07/10/07, signed and sealed by Candido F. Font, P.E.


Manuel Pérez, P.E.
Product Control Examiner
NOA No. 07-1218.08
Expiration Date: June 12, 2013
Approval Date: June 12, 2008

NOTICE OF ACCEPTANCE: EVIDENCE SUBMITTED

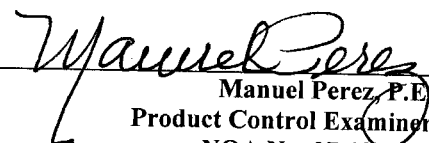
7. Test reports on: 1) Uniform Static Air Pressure Test, Loading per FBC TAS 202-94 along with marked-up drawings and installation diagram of a series 3000 outswing aluminum casement window with center fixed vent, XOX-UE configuration, w/1/2" IG unit composed two 1/8" ann. glass, prepared by Hurricane Engineering & Testing, Inc., Test Report No. **HETI-07-4207G**, dated 07/10/07, signed and sealed by Candido F. Font, P.E.
8. Test reports on: 1) Air Infiltration Test, per FBC, TAS 202-94
2) Uniform Static Air Pressure Test, Loading per FBC TAS 202-94
3) Water Resistance Test, per FBC, TAS 202-94
4) Forced Entry Test, per FBC 2411 3.2.1, TAS 202-94
along with marked-up drawings and installation diagram of a series 3000 outswing aluminum casement window with center fixed vent, XOX-UE configuration, w/3/16" temp. glass, prepared by Hurricane Engineering & Testing, Inc., Test Report No. **HETI-07-4207H**, dated 07/10/07, signed and sealed by Candido F. Font, P.E.
9. Test reports on: 1) Air Infiltration Test, per FBC, TAS 202-94
2) Uniform Static Air Pressure Test, Loading per FBC TAS 202-94
3) Water Resistance Test, per FBC, TAS 202-94
4) Forced Entry Test, per FBC 2411 3.2.1, TAS 202-94
along with marked-up drawings and installation diagram of a series 3000 outswing aluminum casement window, XOX-UE configuration with center fixed vent, w/3/16" temp. glass, prepared by Hurricane Engineering & Testing, Inc., Test Report No. **HETI-07-4207I**, dated 07/10/07, signed and sealed by Candido F. Font, P.E.
10. Test reports on: 1) Air Infiltration Test, per FBC, TAS 202-94
2) Uniform Static Air Pressure Test, Loading per FBC TAS 202-94
3) Water Resistance Test, per FBC, TAS 202-94
4) Forced Entry Test, per FBC 2411 3.2.1, TAS 202-94
along with marked-up drawings and installation diagram of a series 3000 outswing aluminum casement window, XOX-UE configuration with center fixed vent, w/3/16" temp. glass, prepared by Hurricane Engineering & Testing, Inc., Test Report No. **HETI-07-4207J**, dated 07/10/07, signed and sealed by Candido F. Font, P.E.

C. CALCULATIONS

1. Anchor verification calculations and structural analysis, complying with FBC-2004, prepared by manufacturer, dated 11/15/07, signed and sealed by Thomas J. Sotos, P.E.
Complies with ASTM E1300-98

D. QUALITY ASSURANCE

1. Miami Dade Building Code Compliance Office (BCCO).


Manuel Perez, P.E.
Product Control Examiner
NOA No. 07-1218.08
Expiration Date: June 12, 2013
Approval Date: June 12, 2008

Lawson Industries, Inc.

NOTICE OF ACCEPTANCE: EVIDENCE SUBMITTED

E. MATERIAL CERTIFICATIONS

1. None.


F. STATEMENTS

1. Statement letter of conformance, dated November 15, 2007, signed and sealed by Thomas J. Sotos, P.E.

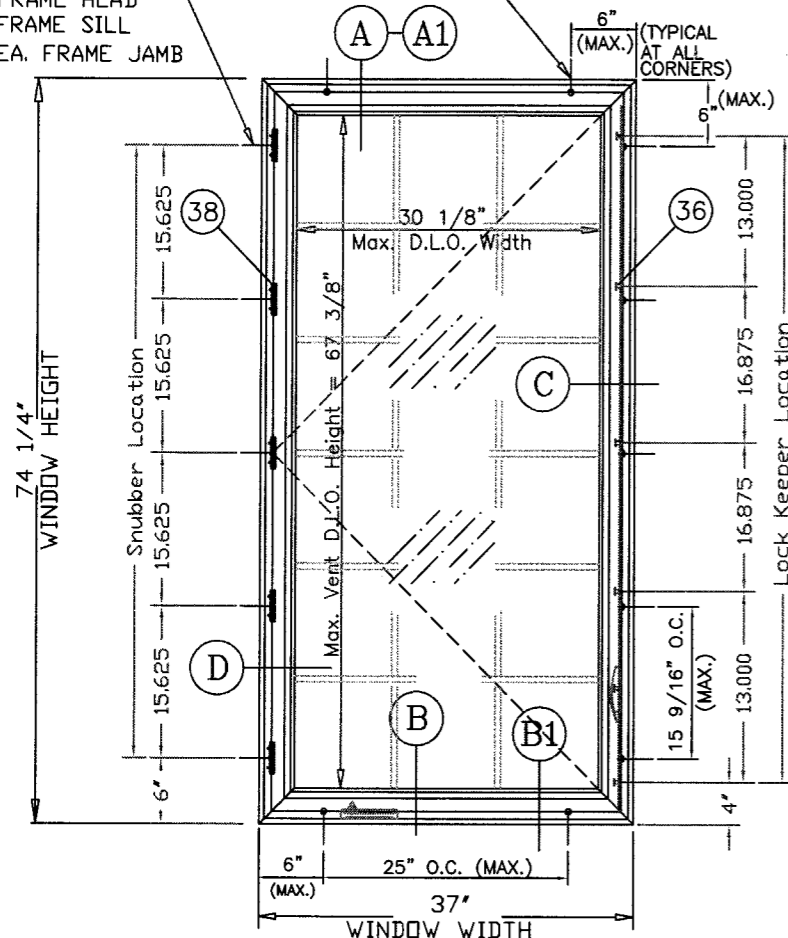
2. Statement letter of no financial interest, dated August 1, 2007, signed and sealed by Thomas J. Sotos, P.E.

G. OTHER

1. None.


Manuel Perez, P.E.
Product Control Examiner
NOA No. 07-1218.08
Expiration Date: June 12, 2013
Approval Date: June 12, 2008

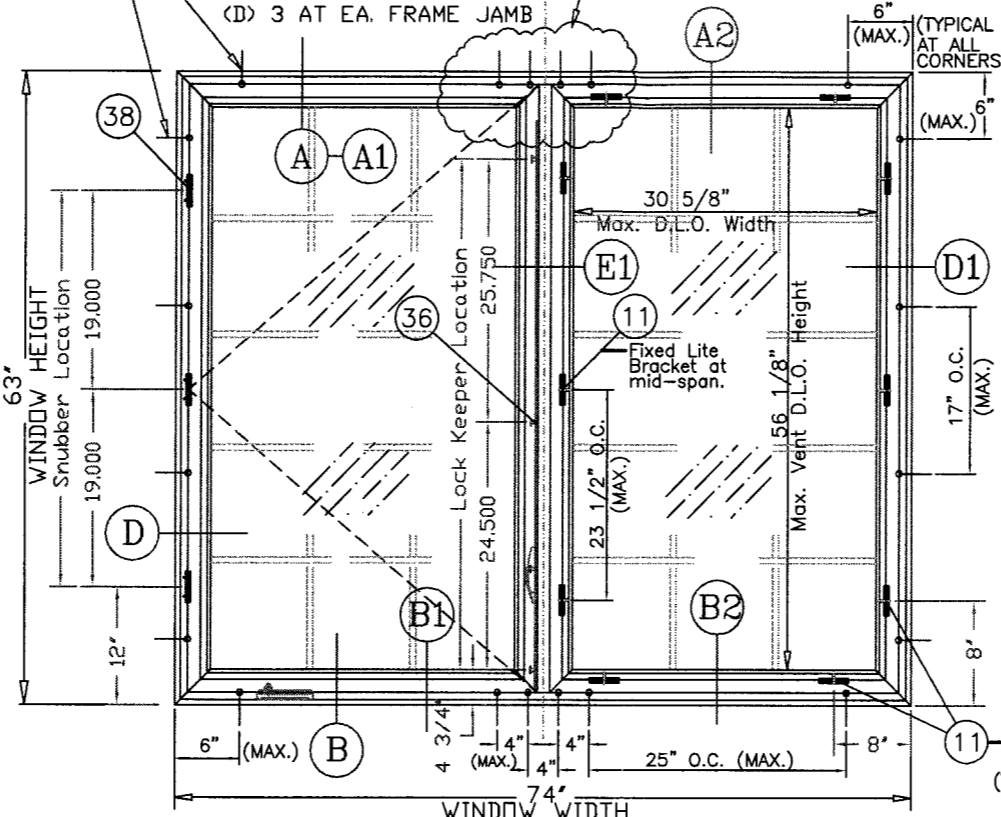
#12 S.M.S. ANCHORS:
 (A) 3 AT FRAME HEAD
 (C) 3 AT FRAME SILL
 (D) 4 AT EA. FRAME JAMB



"X" ELEVATION
 (LIMITED TO LOADS ON SHEET 6 OF 10)

#12 S.M.S. ANCHORS:
 (A) 6 AT FRAME HEAD
 (C) 6 AT FRAME SILL
 (D) 3 AT EA. FRAME JAMB

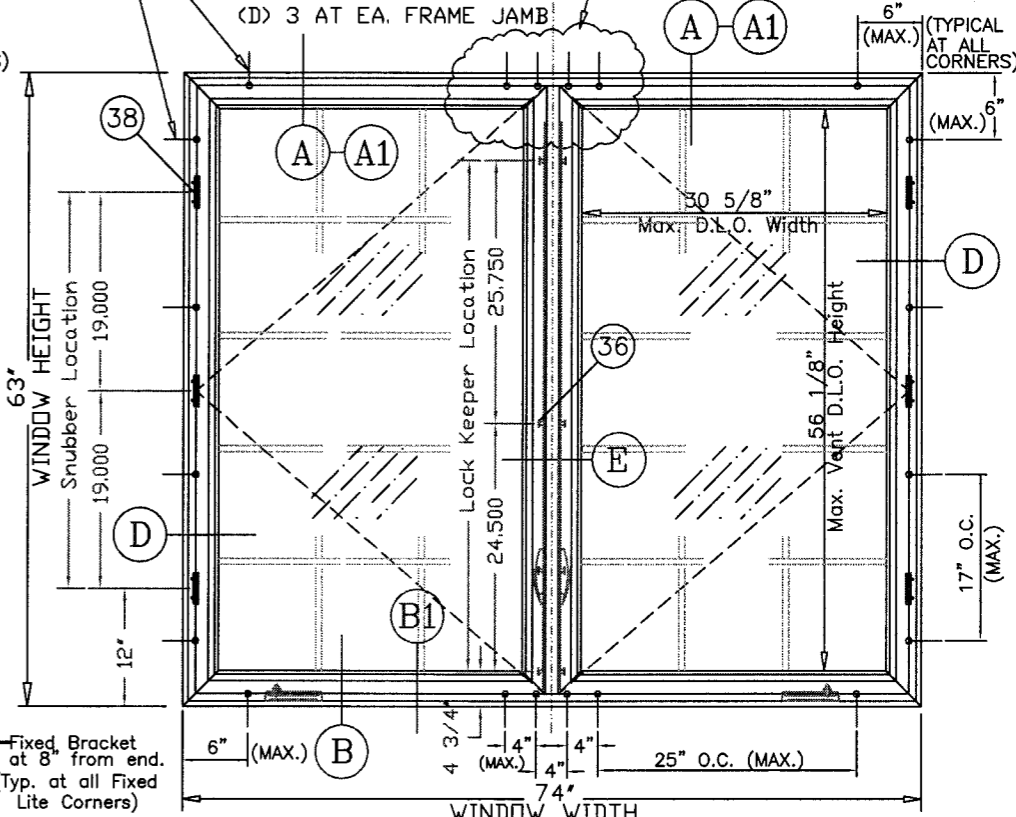
ANCHOR CLUSTER
 SEE DETAILS AT
 SHEET 5 OF 10
 (FRAME SILL TYPICAL)



"XO" ELEVATION - (OX reversed)
 (LIMITED TO LOADS ON SHEET 7 OF 10)

#12 S.M.S. ANCHORS:
 (A) 6 AT FRAME HEAD
 (C) 6 AT FRAME SILL
 (D) 3 AT EA. FRAME JAMB

ANCHOR CLUSTER
 SEE DETAILS AT
 SHEET 5 OF 10
 (FRAME SILL TYPICAL)



"XX" ELEVATION
 (LIMITED TO LOADS ON SHEET 7 OF 10)

SERIES-3000 OUTSWING CASEMENT NON-IMPACT WINDOW APPROVED ELEVATIONS

General Notes:

- THIS WINDOW SYSTEM IS DESIGNED AND TESTED TO COMPLY WITH THE REQUIREMENTS OF THE 2004 FLORIDA BUILDING CODE AND ASTM 1300-98. THIS PRODUCT IS NOT IMPACT RESISTANT. WINDOWS ARE TO BE PROTECTED WITH MIAMI-DADE COUNTY APPROVED IMPACT RESISTANT SHUTTERS.
- 1 X OR 2 X WOOD BUCKS SHALL BE INSTALLED AND ANCHORED SO THAT THE BUILDING RESISTS THE SUPERIMPOSED LOADS IN ACCORDANCE WITH REQUIREMENTS OF 2004 F.B.C. & TO BE REVIEWED BY BUILDING OFFICIAL.
- ANCHORS SHOWN ABOVE ARE AS PER TEST UNITS. EXTERIOR ANCHOR SPACINGS WILL VARY WITH UNIT DIMENSIONS, AND THE NUMBER OF ANCHORS REQUIRED, AS SPECIFIED ON THE LOAD TABLES AT SHEETS 6, 7, & 8 OF 10.
- ANCHOR CONDITIONS NOT DESCRIBED IN THESE DRAWING'S ARE TO BE ENGINEERED ON A SITE SPECIFIC BASIS, UNDER SEPARATE APPROVAL AND TO BE REVIEWED BY BUILDING OFFICIAL.
- EQUAL LITE WINDOWS ARE QUALIFIED FOR USE WITH "XX", "OX", "XO" AND "XOX", AND ALL GLASS TABULATED HEREIN.
- UN-EQUAL LITE WINDOWS ARE QUALIFIED FOR USE WITH "OXO", "OX", AND "XO". AND ALL GLASS TABULATED HEREIN.
- SEE SHEET # 1 OF 10 AND # 2 OF 10 FOR CONFIGURATION OPTIONS & NOTES.
- SEE SHEET # 9 OF 10 FOR GLAZING DETAILS & OPTIONS. (REFER TO SHEETS 6, 7, & 8 FOR DESIGN PRESSURES.
- WOOD BUCKS IN CONTACT WITH CONCRETE MUST BE PRESSURE TREATED AND ANCHORED (BY OTHERS), PRIOR TO WINDOW INSTALLATION. (SEE SHEET #2 FOR DETAIL & NOTES)
- TEMPERED GLASS MAY BE USED, BUT DESIGN PRESSURES ARE LIMITED TO LOAD TABLES ON CHARTS FOR 1/4" MONOLITHIC & 1/2" INSULATED ANNEALED GLASS
- FRAME SILL ANCHOR CLIPS TO BE MEASURED FROM THE INSIDE EDGE OF THE WINDOW FRAME AND TO BE LOCATED WITHIN A +/- 1/2" TOLERANCE. TOTAL OF ANCHORS REQUIRED AT SILL TO BE THE SAME AS FRAME HEAD.
- SEE SHEET # 4 OF 10 FOR FLANGE PERIMETER CAULK/ INSTALLATION DETAIL.
- MATERIALS: INCLUDING BUT NOT LIMITED TO STEEL SCREWS, THAT COME INTO CONTACT WITH OTHER DISSIMILAR MATERIALS SHALL MEET THE REQUIREMENTS OF SECTION 2003.8.4 OF THE 2004 FLORIDA BUILDING CODE.
- EXT. & INT. FALSE COLONIAL MUNTINS ARE OPTIONAL & AND ARE APPLIED W/ SILICONE

ANCHORS NOTE:

ANCHORS TO BE #12 SMS OR WD. SCREWS INTO WOOD, OR 1/4" TAPCONS INTO CONCRETE, WITH A MINIMUM OF 1 1/4" PENETRATION INTO WOOD OR CONCRETE.
 (REFER TO LOAD TABLES FOR QUANTITIES REQUIRED)

WINDOWS ARE TO BE PROTECTED WITH MIAMI DADE COUNTY APPROVED IMPACT RESISTANT SHUTTERS

Approved as complying with the Florida Building Code
 Date: JUNE 12, 2008
 NOA# 07-1213-08
 Miami Dade Product Control
 Division
 By: *Manuel Perez*

THOMAS V. SOTOS
 PROFESSIONAL ENGINEER
 FL LIC. # 55285

[Handwritten Signature]

DATE

Revision Notes:

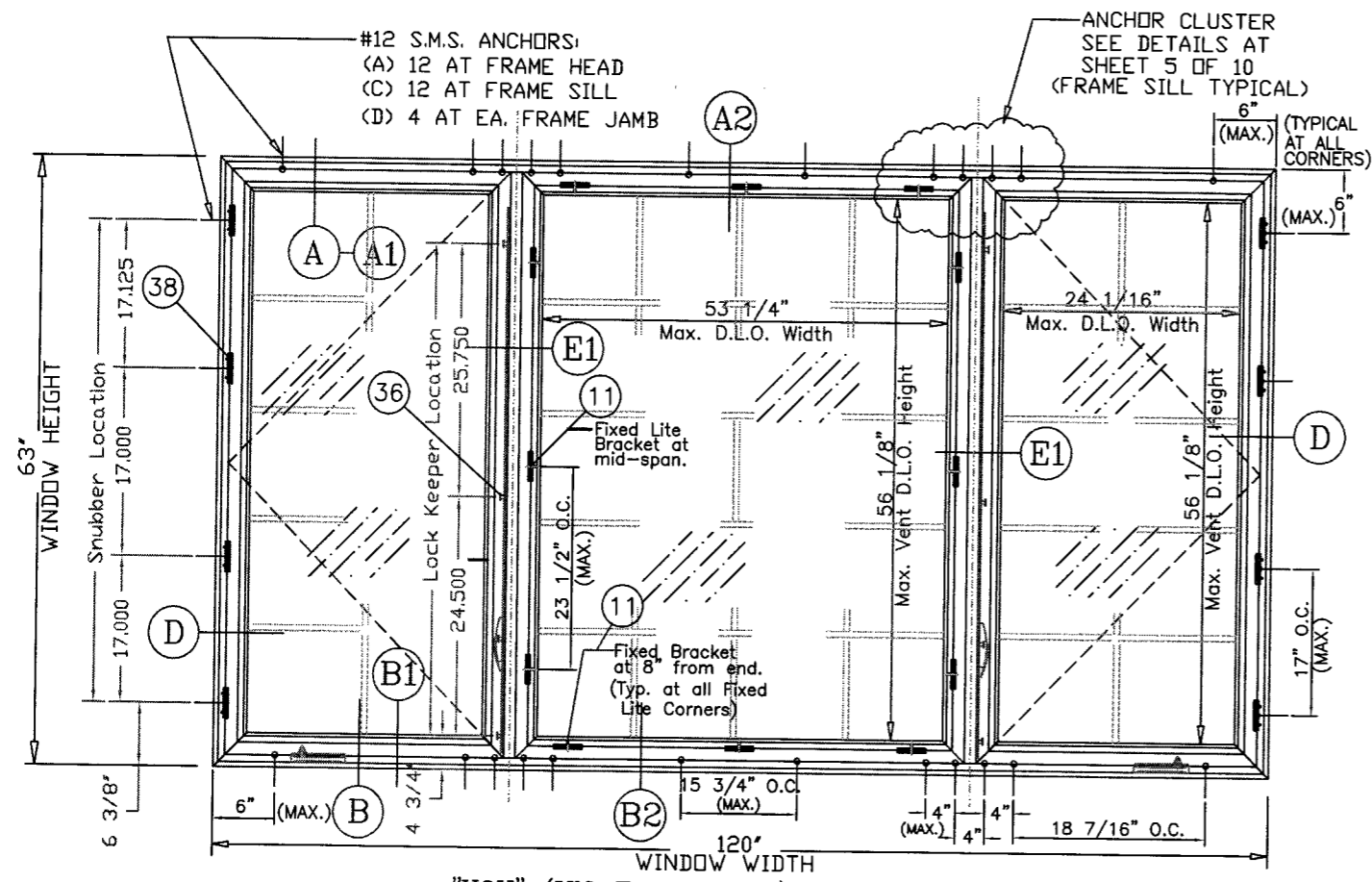
| | | | |
|-----------------|----------|---------------|----------|
| Drawn By: | N. ERAZO | Date Drawn: | 10/27/07 |
| Revised By: | | Date Revised: | |
| Revision Level: | | Scale: | |

LAWSON
 INDUSTRIES, INC.

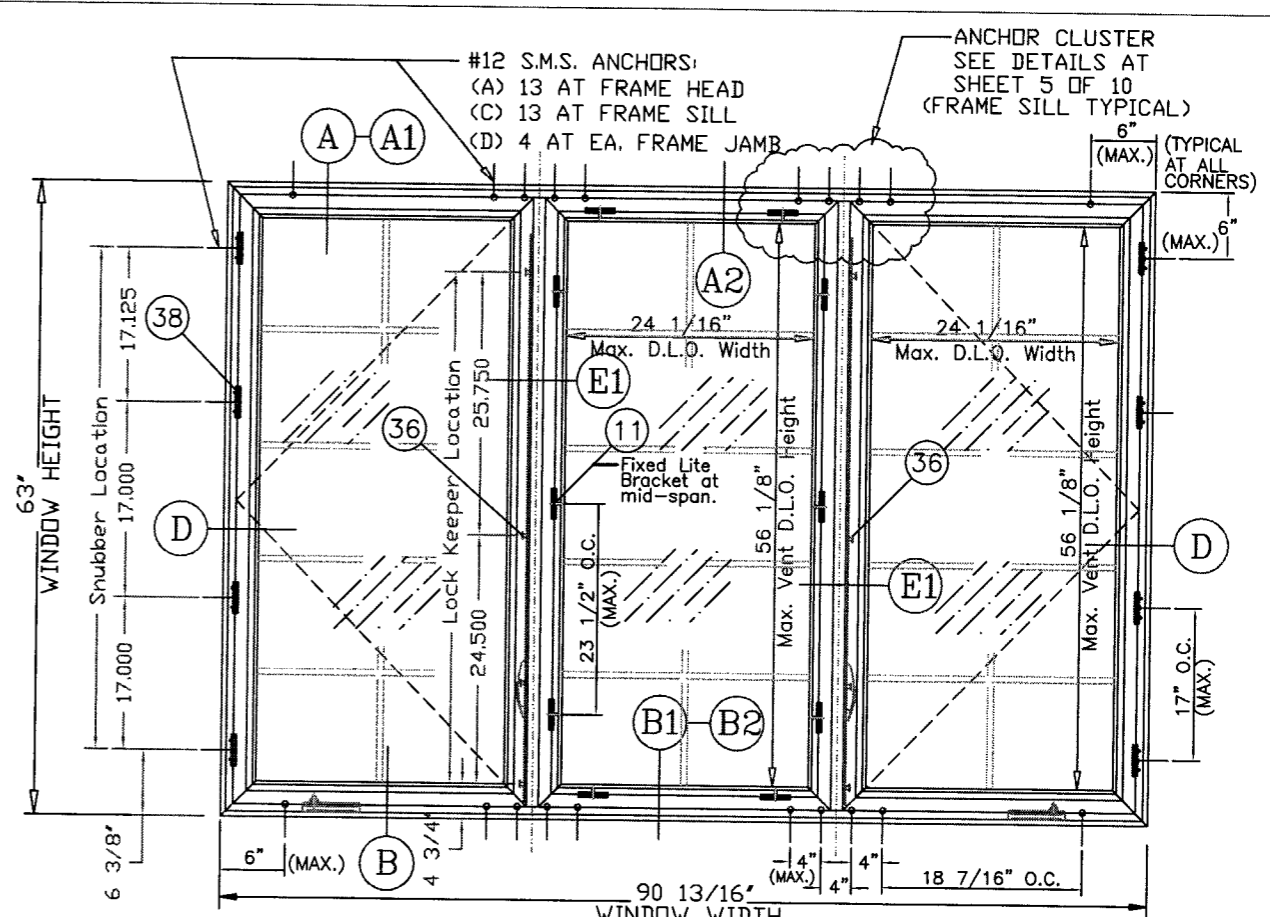
8501 N.W. 90 ST.
 MEDLEY, FLORIDA 33166
 PH No. (305) 696-8660

MANUFACTURER OF QUALITY ALUMINUM WINDOWS AND GLASS DOORS

| | | | | | |
|--|-------------|----------------|-----------------|-------------------|-------------|
| Draw Class: | Part Class: | Prod Category: | Series/Model: | Item Reference #: | Revision #: |
| NOA | ELEVATIONS | WINDOW | 3000 | LCNOA 07-01 | |
| Series: 3000 Outswing Casement Window | | | | | |
| GENERAL NOTES & APPROVED ELEVATIONS (O, X, OX, XX) | | | | | |
| Product Reference Number: | | | Drawing Number: | | Sheet: |
| CASEMENT3000-07NOA-01 | | | L3000-0701.001 | | 1 OF 10 |

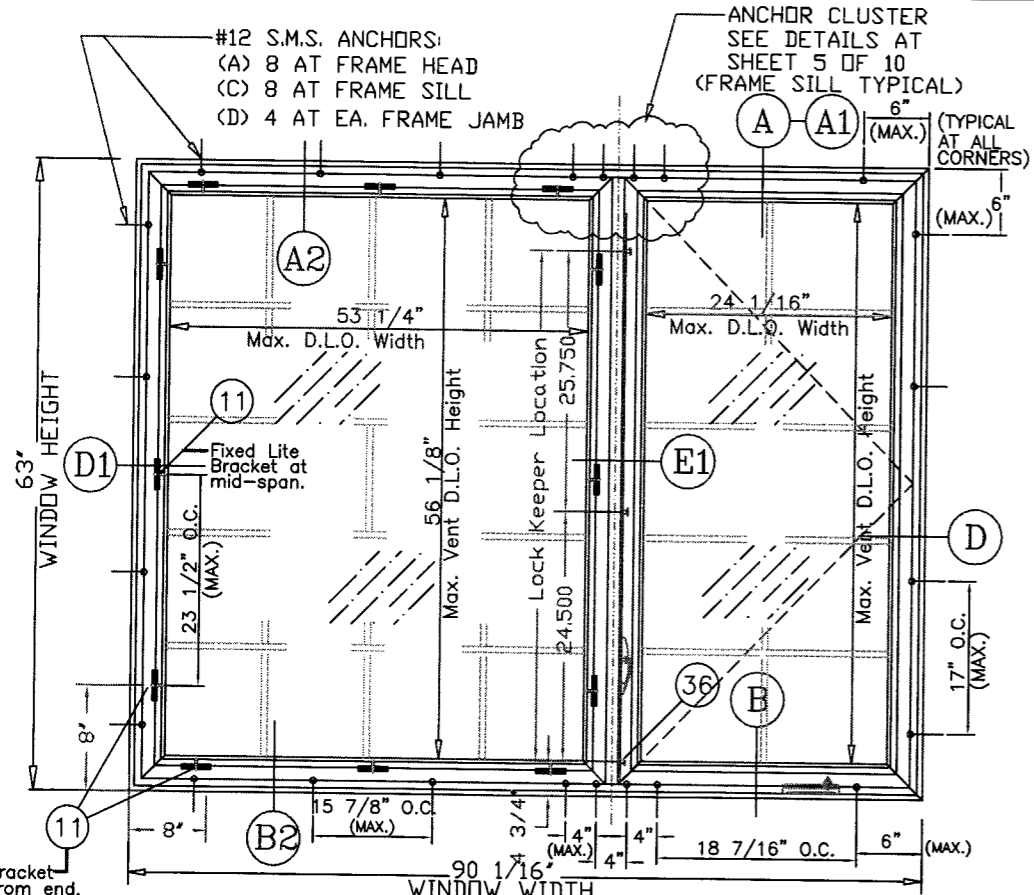


"XOX" (UN-EQUAL LITE) ELEVATION
(LIMITED TO LOADS ON SHEET 8 OF 10)



"XOX" (EQUAL LITE) ELEVATION
(LIMITED TO LOADS ON SHEET 8 OF 10)

SERIES-3000 OUTSWING CASEMENT NON-IMPACT WINDOW APPROVED ELEVATIONS



"OX" (UN-EQUAL LITE) ELEVATION - (XO reversed)
(LIMITED TO LOADS ON SHEET 8 OF 10)

ANCHORS NOTE:
ANCHORS TO BE #12 SMS OR WD. SCREWS INTO WOOD, OR 1/4" TAPCONS INTO CONCRETE, WITH A MINIMUM OF 1 1/4" PENETRATION INTO WOOD OR CONCRETE. (REFER TO LOAD TABLES FOR QUANTITIES REQUIRED)

WINDOWS ARE TO BE PROTECTED WITH MIAMI DADE COUNTY APPROVED IMPACT RESISTANT SHUTTERS

Approved as complying with the Florida Building Code
Date: JUNE 12, 2008
NOA: 07-1218.08
Miami Dade Product Control
By: *Manuel Paez*

THOMAS J. SOTOS
PROFESSIONAL ENGINEER
FL LIC. # 55225
[Signature]

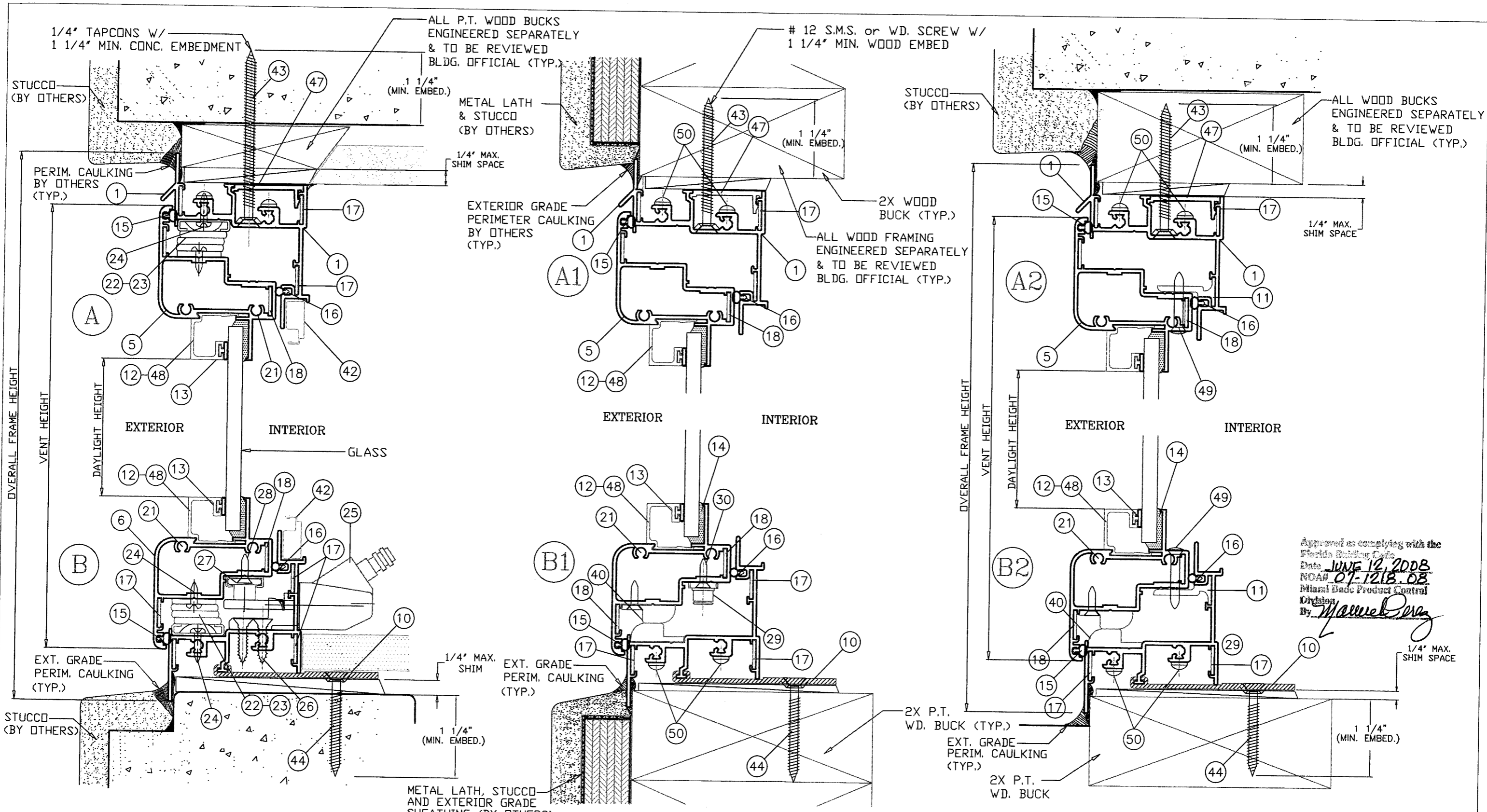
| | |
|-----------------|---------------|
| Revision Notes: | |
| Drawn By: | Date Drawn: |
| Revised By: | Date Revised: |
| Revision Level: | Scale: |
| N. ERAZO | 10/27/07 |
| | |
| | |

LAWSON INDUSTRIES, INC.
MANUFACTURER OF QUALITY ALUMINUM WINDOWS AND GLASS DOORS
8501 N.W. 90 ST. MEDLEY, FLORIDA 33166 PH No. (305) 696-8660

| | | | | | |
|-------------|-------------|----------------|---------------|-------------------|-------------|
| Draw Class: | Part Class: | Prod Category: | Series/Model: | Item Reference #: | Revision #: |
| NOA | ELEVATIONS | WINDOW | 3000 | LCNOA 07-01 | |

Series: 3000 Outswing Casement Window
APPROVED ELEVATIONS (XOX-E, XOX-UE, OX, XO)

| | | |
|---------------------------|-----------------|---------|
| Product Reference Number: | Drawing Number: | Sheet: |
| CASEMENT3000-07NOA-01 | L3000-0701.001 | 2 OF 10 |



Approved as complying with the Florida Building Code
 Date JUNE 12, 2008
 NOAH 07-1218-08
 Miami Dade Product Control Division
 By *Marcus Perry*

* WHEN THE GAP BETWEEN THE WINDOW FRAME AND THE BUCK OR MASONRY IS LESS THAN 1/8", SHIMS ARE NOT REQUIRED.

ANCHORS NOTE:
 ANCHORS TO BE #12 SMS OR WD. SCREWS INTO WOOD, OR 1/4" TAPCONS INTO CONCRETE, WITH A MINIMUM OF 1 1/4" PENETRATION INTO WOOD OR CONCRETE. (REFER TO LOAD TABLES FOR QUANTITIES REQUIRED)

THOMAS J. SOTOS
 PROFESSIONAL ENGINEER
 FL LIC. # 55225

[Signature]
 DATE

| | |
|-----------------|---------------|
| Revision Notes: | |
| Drawn By: | Date Drawn: |
| Revised By: | Date Revised: |
| Revision Level: | Scale: |
| N. ERAZO | 10/27/07 |
| | |
| | |

LAWSON INDUSTRIES, INC.

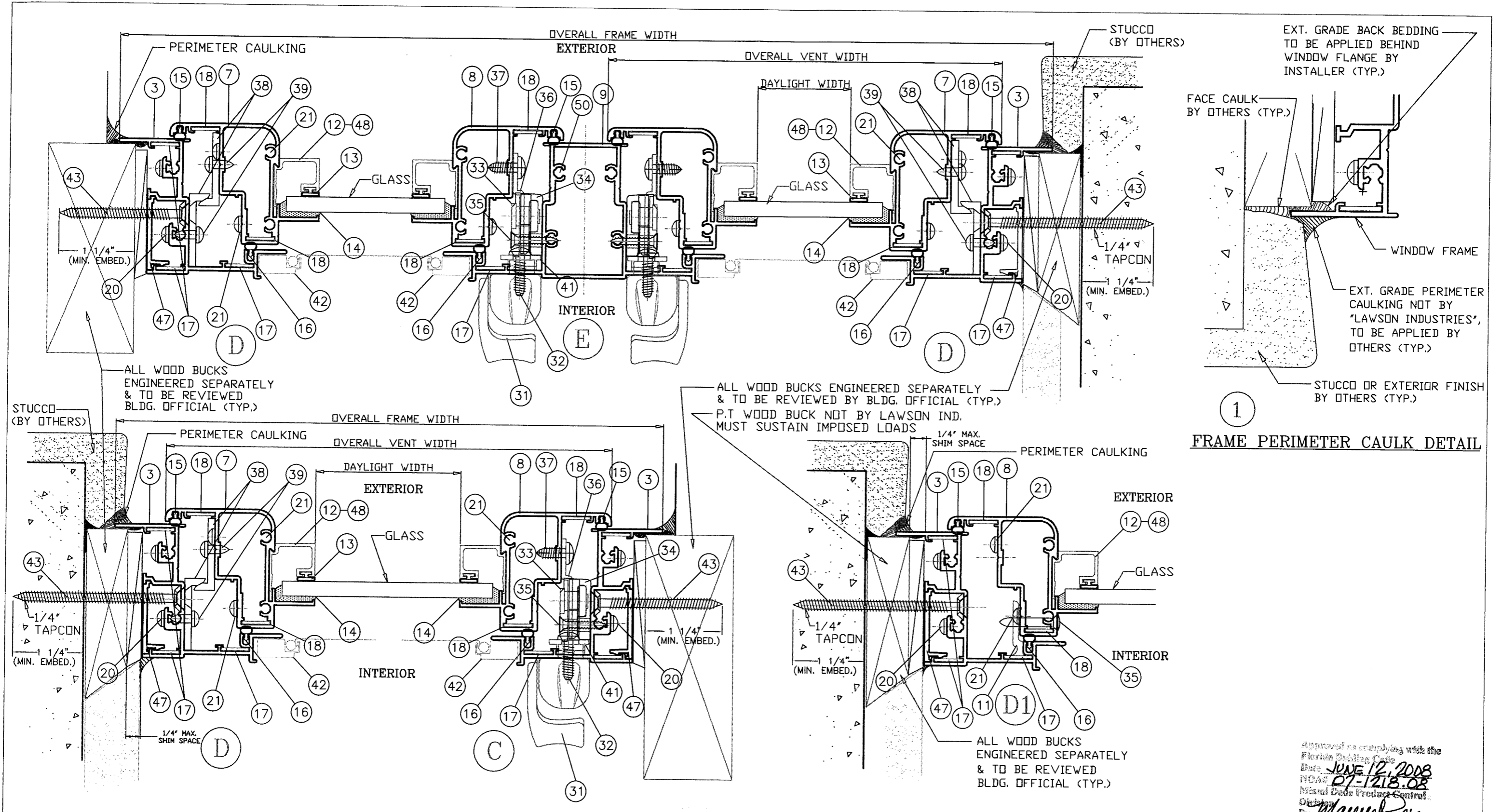
8501 N.W. 90 ST.
 MEDLEY, FLORIDA 33166
 PH No. (305) 696-8660

MANUFACTURER OF QUALITY ALUMINUM WINDOWS AND GLASS DOORS

| | | | | | |
|-------------|-------------|----------------|---------------|-------------------|-------------|
| Draw Class: | Part Class: | Prod Category: | Series/Model: | Item Reference #: | Revision #: |
| NOA | ASSEMBLY | WINDOW | 3000 | LCNOA 07-01 | |

Series: 3000 Outswing Casement Window
 VERTICAL CROSS-SECTIONS, NOTES & DETAILS

| | | |
|---------------------------|-----------------|---------|
| Product Reference Number: | Drawing Number: | Sheet: |
| CASEMENT3000-07NOA-01 | L3000-0701.001 | 3 OF 10 |



1
FRAME PERIMETER CAULK DETAIL

ANCHORS NOTE:
 ANCHORS TO BE #12 SMS DR WD. SCREWS INTO WOOD, OR 1/4" TAPCONS INTO CONCRETE, WITH A MINIMUM OF 1 1/4" PENETRATION INTO WOOD OR CONCRETE. (REFER TO LOAD TABLES FOR QUANTITIES REQUIRED)

* WHEN THE GAP BETWEEN THE WINDOW FRAME AND THE BUCK OR MASONRY IS LESS THAN 1/8", SHIMS ARE NOT REQUIRED.

THOMAS J. SOTOS
 PROFESSIONAL ENGINEER
 FL LIC # 55225

[Signature]

DATE

Revision Notes:

| | | | |
|-----------------|----------|---------------|----------|
| Drawn By: | N. ERAZO | Date Drawn: | 10/27/07 |
| Revised By: | | Date Revised: | |
| Revision Level: | | Scale: | |

LAWSON INDUSTRIES, INC.

8501 N.W. 90 ST.
 MEDLEY, FLORIDA 33166
 PH No. (305) 696-8660

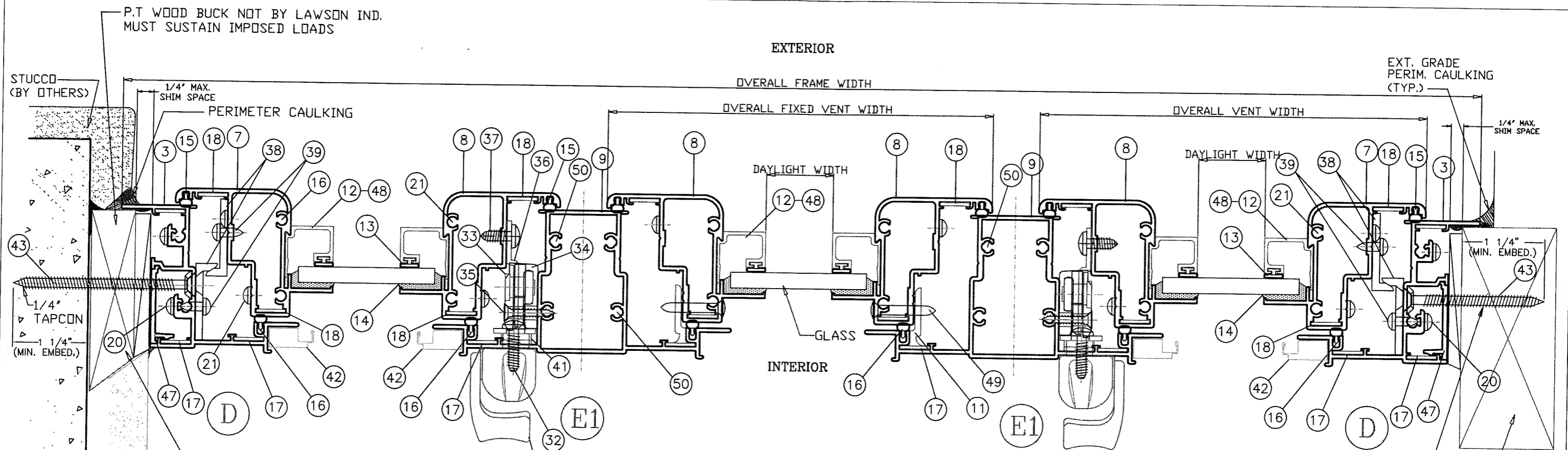
MANUFACTURER OF QUALITY ALUMINUM WINDOWS AND GLASS DOORS

| | | | | | |
|-------------|-------------|----------------|---------------|-------------------|-------------|
| Draw Class: | Part Class: | Prod Category: | Series/Model: | Item Reference #: | Revision #: |
| NOA | ASSEMBLY | WINDOW | 3000 | LCNOA 07-01 | |

Series: 3000 Outswing Casement Window
 HORIZONTAL CROSS-SECTIONS, NOTES & DETAILS

| | | |
|---------------------------|-----------------|---------|
| Product Reference Number: | Drawing Number: | Sheet: |
| CASEMENT3000-07NOA-01 | L3000-0701.001 | 4 OF 10 |

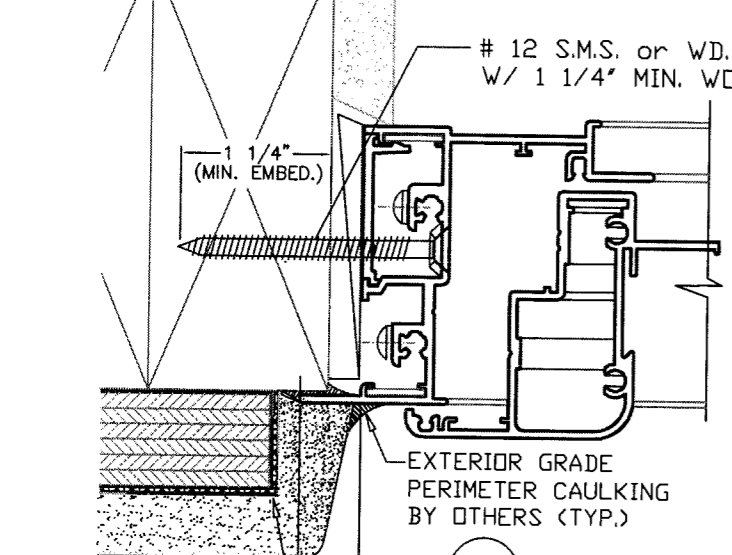
Approved as complying with the Florida Building Code
 Date: JUNE 12, 2008
 NOA: 07-1218-08
 Miami Dade Product Control
 By: *[Signature]*



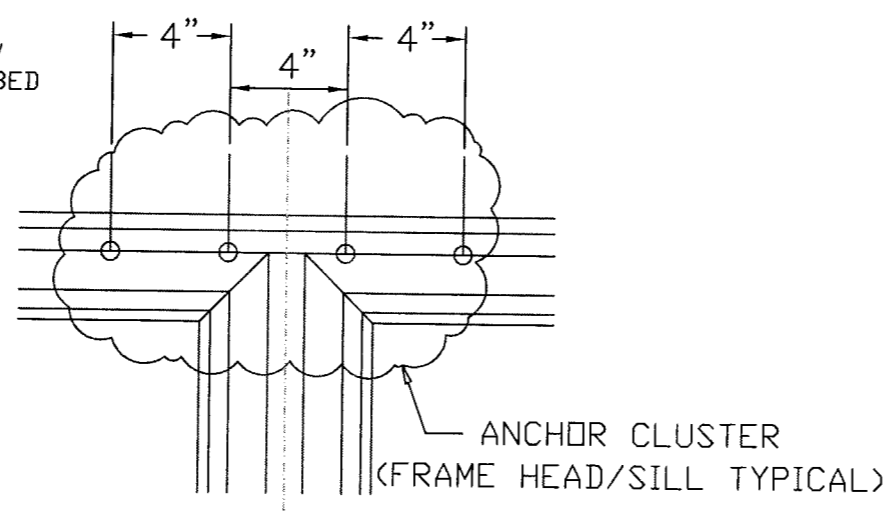
ALL WOOD BUCKS ENGINEERED SEPARATELY & TO BE REVIEWED BLDG. OFFICIAL (TYP.)

12 S.M.S. or WD. SCREW W/ 1 1/4" MIN. WOOD EMBED

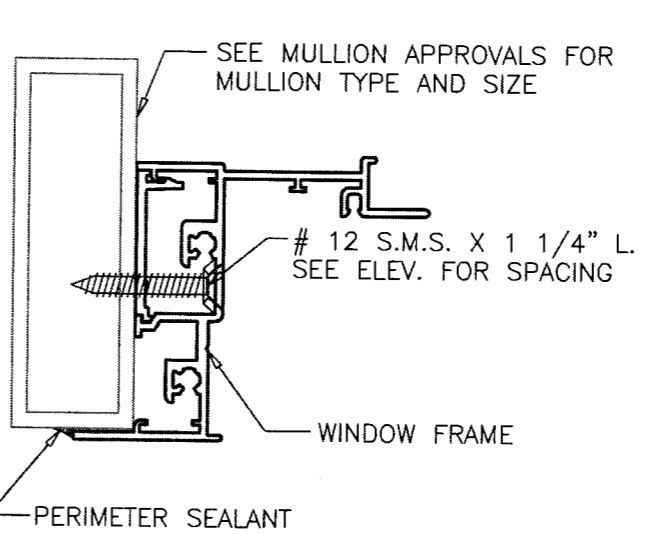
ALL WOOD BUCKS ENGINEERED SEPARATELY & TO BE REVIEWED BLDG. OFFICIAL (TYP.)



2 INSTALLATION DETAIL



3 INPOST ANCHOR DETAIL



4 MULLION DETAIL

* WHEN THE GAP BETWEEN THE WINDOW FRAME AND THE BUCK OR MASONRY IS LESS THAN 1/8", SHIMS ARE NOT REQUIRED.

ANCHORS NOTE:
 ANCHORS TO BE #12 SMS OR WD. SCREWS INTO WOOD, OR 1/4" TAPCONS INTO CONCRETE, WITH A MINIMUM OF 1 1/4" PENETRATION INTO WOOD OR CONCRETE. (REFER TO LOAD TABLES FOR QUANTITIES REQUIRED)

Approved as complying with the Florida Building Code
 Date: JUNE 12, 2008
 NOA# 07-1218.03
 Minimal Date Product Control Division
 By: *Manuel Erazo*

| | | | | | | | | | | | |
|--|--------------------|--------|--|---|---|--|--------------------------------|----------------|----------------|-------------------|-------------|
| THOMAS J. SOTOS PROFESSIONAL ENGINEER FL LIC # 55225 DATE _____ | Revision Notes: | | LAWSON INDUSTRIES, INC. | | | 8501 N.W. 90 ST. MEDLEY, FLORIDA 33166 PH No. (305) 696-8660 | | | | | |
| | | | MANUFACTURER OF QUALITY ALUMINUM WINDOWS AND GLASS DOORS | | | Draw Class: | Part Class: | Prod Category: | Series/Model: | Item Reference #: | Revision #: |
| | Drawn By: N. ERAZO | | Date Drawn: 10/27/07 | | NOA | ASSEMBLY | WINDOW | 3000 | LCNOA 07-01 | | |
| | Revised By: | | Date Revised: | | Series: 3000 Outswing Casement Window HORIZONTAL CROSS-SECTIONS, NOTES & DETAILS | | | | | | |
| Revision Level: | | Scale: | | Product Reference Number: CASEMENT3000-07NOA-01 | | | Drawing Number: L3000-0701.001 | | Sheet: 5 OF 10 | | |

| 3000 Non Impact Casement Window Flange Frame with 3/16" Annealed Glass Configuration: "X" | | | | | | |
|---|------------|-------------|------------|------------|-----------|------|
| Size Code | Width (in) | Height (in) | DP (+) psf | DP (-) psf | Anchors | |
| | | | | | Head/Sill | Jamb |
| 12 | 19.125 | 26 | 70.0 | 100.0 | 2 | 2 |
| 13 | 19.125 | 38.375 | 70.0 | 100.0 | 2 | 3 |
| 14 | 19.125 | 50.625 | 70.0 | 100.0 | 2 | 3 |
| 15 | 19.125 | 63 | 70.0 | 84.8 | 2 | 4 |
| 16 | 19.125 | 74.25 | 70.0 | 70.0 | 2 | 5 |
| H32 | 26.5 | 26 | 70.0 | 100.0 | 2 | 2 |
| H33 | 26.5 | 38.375 | 70.0 | 100.0 | 2 | 3 |
| H34 | 26.5 | 50.625 | 70.0 | 80.7 | 2 | 3 |
| H35 | 26.5 | 63 | 65.7 | 65.7 | 2 | 4 |
| H36 | 26.5 | 74.25 | 53.6 | 53.6 | 2 | 5 |
| 22 | 37 | 26 | 70.0 | 100.0 | 2 | 2 |
| 23 | 37 | 38.375 | 70.0 | 74.7 | 2 | 3 |
| 24 | 37 | 50.625 | 53.0 | 53.0 | 2 | 3 |
| 25 | 37 | 63 | 40.5 | 40.5 | 2 | 4 |
| 26 | 37 | 74.25 | 33.2 | 33.2 | 2 | 5 |
| 2020 | 24 | 24 | 70.0 | 100.0 | 2 | 2 |
| 2030 | 24 | 36 | 70.0 | 100.0 | 2 | 3 |
| 2040 | 24 | 48 | 70.0 | 100.0 | 2 | 3 |
| 2050 | 24 | 60 | 70.0 | 75.2 | 2 | 4 |
| 2060 | 24 | 72 | 60.2 | 60.2 | 2 | 5 |
| 2620 | 30 | 24 | 70.0 | 100.0 | 2 | 2 |
| 2630 | 30 | 36 | 70.0 | 98.8 | 2 | 3 |
| 2640 | 30 | 48 | 69.6 | 69.6 | 2 | 3 |
| 2650 | 30 | 60 | 55.2 | 55.2 | 2 | 4 |
| 2660 | 30 | 72 | 48.8 | 48.8 | 2 | 5 |
| 2820 | 32 | 24 | 70.0 | 100.0 | 2 | 2 |
| 2830 | 32 | 36 | 70.0 | 92.1 | 2 | 3 |
| 2840 | 32 | 48 | 64.2 | 64.2 | 2 | 3 |
| 2850 | 32 | 60 | 49.3 | 49.3 | 2 | 4 |
| 2860 | 32 | 72 | 42.4 | 42.4 | 2 | 5 |
| 3020 | 36 | 24 | 70.0 | 100.0 | 2 | 2 |
| 3030 | 36 | 36 | 70.0 | 81.7 | 2 | 3 |
| 3040 | 36 | 48 | 58.1 | 58.1 | 2 | 3 |
| 3050 | 36 | 60 | 43.8 | 43.8 | 2 | 4 |
| 3060 | 36 | 72 | 35.5 | 35.5 | 2 | 5 |

| 3000 Non Impact Casement Window Flange Frame with 3/16" Tempered Glass Configuration: "X" | | | | | | |
|---|------------|-------------|------------|------------|-----------|------|
| Size Code | Width (in) | Height (in) | DP (+) psf | DP (-) psf | Anchors | |
| | | | | | Head/Sill | Jamb |
| 12 | 19.125 | 26 | 70.0 | 100.0 | 2 | 2 |
| 13 | 19.125 | 38.375 | 70.0 | 100.0 | 2 | 3 |
| 14 | 19.125 | 50.625 | 70.0 | 100.0 | 2 | 3 |
| 15 | 19.125 | 63 | 70.0 | 100.0 | 2 | 4 |
| 16 | 19.125 | 74.25 | 70.0 | 100.0 | 2 | 5 |
| H32 | 26.5 | 26 | 70.0 | 100.0 | 2 | 2 |
| H33 | 26.5 | 38.375 | 70.0 | 100.0 | 2 | 3 |
| H34 | 26.5 | 50.625 | 70.0 | 100.0 | 2 | 3 |
| H35 | 26.5 | 63 | 70.0 | 100.0 | 2 | 4 |
| H36 | 26.5 | 74.25 | 70.0 | 100.0 | 2 | 5 |
| 22 | 37 | 26 | 70.0 | 100.0 | 2 | 2 |
| 23 | 37 | 38.375 | 70.0 | 100.0 | 2 | 3 |
| 24 | 37 | 50.625 | 70.0 | 100.0 | 2 | 3 |
| 25 | 37 | 63 | 70.0 | 100.0 | 2 | 4 |
| 26 | 37 | 74.25 | 70.0 | 100.0 | 2 | 5 |
| 2020 | 24 | 24 | 70.0 | 100.0 | 2 | 2 |
| 2030 | 24 | 36 | 70.0 | 100.0 | 2 | 3 |
| 2040 | 24 | 48 | 70.0 | 100.0 | 2 | 3 |
| 2050 | 24 | 60 | 70.0 | 100.0 | 2 | 4 |
| 2060 | 24 | 72 | 70.0 | 100.0 | 2 | 5 |
| 2620 | 30 | 24 | 70.0 | 100.0 | 2 | 2 |
| 2630 | 30 | 36 | 70.0 | 100.0 | 2 | 3 |
| 2640 | 30 | 48 | 70.0 | 100.0 | 2 | 3 |
| 2650 | 30 | 60 | 70.0 | 100.0 | 2 | 4 |
| 2660 | 30 | 72 | 70.0 | 100.0 | 2 | 5 |
| 2820 | 32 | 24 | 70.0 | 100.0 | 2 | 2 |
| 2830 | 32 | 36 | 70.0 | 100.0 | 2 | 3 |
| 2840 | 32 | 48 | 70.0 | 100.0 | 2 | 3 |
| 2850 | 32 | 60 | 70.0 | 100.0 | 2 | 4 |
| 2860 | 32 | 72 | 70.0 | 100.0 | 2 | 5 |
| 3020 | 36 | 24 | 70.0 | 100.0 | 2 | 2 |
| 3030 | 36 | 36 | 70.0 | 100.0 | 2 | 3 |
| 3040 | 36 | 48 | 70.0 | 100.0 | 2 | 3 |
| 3050 | 36 | 60 | 70.0 | 100.0 | 2 | 4 |
| 3060 | 36 | 72 | 70.0 | 100.0 | 2 | 5 |

| 3000 Non Impact Casement Window Flange Frame with 1/4" Annealed Glass Configuration: "X" | | | | | | |
|--|------------|-------------|------------|------------|-----------|------|
| Size Code | Width (in) | Height (in) | DP (+) psf | DP (-) psf | Anchors | |
| | | | | | Head/Sill | Jamb |
| 12 | 19.125 | 26 | 70.0 | 100.0 | 2 | 2 |
| 13 | 19.125 | 38.375 | 70.0 | 100.0 | 2 | 3 |
| 14 | 19.125 | 50.625 | 70.0 | 100.0 | 2 | 3 |
| 15 | 19.125 | 63 | 70.0 | 100.0 | 2 | 4 |
| 16 | 19.125 | 74.25 | 70.0 | 90.0 | 2 | 5 |
| H32 | 26.5 | 26 | 70.0 | 100.0 | 2 | 2 |
| H33 | 26.5 | 38.375 | 70.0 | 100.0 | 2 | 3 |
| H34 | 26.5 | 50.625 | 70.0 | 100.0 | 2 | 3 |
| H35 | 26.5 | 63 | 70.0 | 84.5 | 2 | 4 |
| H36 | 26.5 | 74.25 | 68.9 | 68.9 | 2 | 5 |
| 22 | 37 | 26 | 70.0 | 100.0 | 2 | 2 |
| 23 | 37 | 38.375 | 70.0 | 97.1 | 3 | 3 |
| 24 | 37 | 50.625 | 70.0 | 70.0 | 2 | 3 |
| 25 | 37 | 63 | 53.6 | 53.6 | 2 | 4 |
| 26 | 37 | 74.25 | 46.0 | 46.0 | 2 | 5 |
| 2020 | 24 | 24 | 70.0 | 100.0 | 2 | 2 |
| 2030 | 24 | 36 | 70.0 | 100.0 | 2 | 3 |
| 2040 | 24 | 48 | 70.0 | 100.0 | 2 | 3 |
| 2050 | 24 | 60 | 70.0 | 96.7 | 2 | 4 |
| 2060 | 24 | 72 | 70.0 | 77.3 | 2 | 5 |
| 2620 | 30 | 24 | 70.0 | 100.0 | 2 | 2 |
| 2630 | 30 | 36 | 70.0 | 100.0 | 2 | 3 |
| 2640 | 30 | 48 | 70.0 | 97.3 | 2 | 3 |
| 2650 | 30 | 60 | 70.0 | 80.1 | 2 | 4 |
| 2660 | 30 | 72 | 65.1 | 65.1 | 2 | 5 |
| 2820 | 32 | 24 | 70.0 | 100.0 | 2 | 2 |
| 2830 | 32 | 36 | 70.0 | 100.0 | 2 | 3 |
| 2840 | 32 | 48 | 70.0 | 87.1 | 3 | 3 |
| 2850 | 32 | 60 | 70.0 | 71.2 | 2 | 4 |
| 2860 | 32 | 72 | 61.5 | 61.5 | 2 | 5 |
| 3020 | 36 | 24 | 70.0 | 100.0 | 2 | 2 |
| 3030 | 36 | 36 | 70.0 | 100.0 | 3 | 3 |
| 3040 | 36 | 48 | 70.0 | 76.4 | 3 | 3 |
| 3050 | 36 | 60 | 58.3 | 58.3 | 2 | 4 |
| 3060 | 36 | 72 | 49.3 | 49.3 | 2 | 5 |

| 3000 Non Impact Casement Window Flange Frame with 1/2" Annealed Insulated Glass Configuration: "X" | | | | | | |
|--|------------|-------------|------------|------------|-----------|------|
| Size Code | Width (in) | Height (in) | DP (+) psf | DP (-) psf | Anchors | |
| | | | | | Head/Sill | Jamb |
| 12 | 19.125 | 26 | 70.0 | 100.0 | 2 | 2 |
| 13 | 19.125 | 38.375 | 70.0 | 100.0 | 2 | 3 |
| 14 | 19.125 | 50.625 | 70.0 | 100.0 | 2 | 3 |
| 15 | 19.125 | 63 | 70.0 | 100.0 | 2 | 4 |
| 16 | 19.125 | 74.25 | 70.0 | 92.3 | 2 | 5 |
| H32 | 26.5 | 26 | 70.0 | 100.0 | 2 | 2 |
| H33 | 26.5 | 38.375 | 70.0 | 100.0 | 2 | 3 |
| H34 | 26.5 | 50.625 | 68.7 | 68.7 | 2 | 3 |
| H35 | 26.5 | 63 | 54.1 | 54.1 | 2 | 4 |
| H36 | 26.5 | 74.25 | 48.4 | 48.4 | 2 | 5 |
| 22 | 37 | 26 | 70.0 | 100.0 | 2 | 2 |
| 23 | 37 | 38.375 | 70.0 | 82.8 | 2 | 3 |
| 24 | 37 | 50.625 | 61.7 | 61.7 | 2 | 3 |
| 25 | 37 | 63 | 45.8 | 45.8 | 2 | 4 |
| 26 | 37 | 74.25 | 35.9 | 35.9 | 2 | 5 |
| 2020 | 24 | 24 | 70.0 | 100.0 | 2 | 2 |
| 2030 | 24 | 36 | 70.0 | 100.0 | 2 | 3 |
| 2040 | 24 | 48 | 70.0 | 81.8 | 2 | 3 |
| 2050 | 24 | 60 | 69.2 | 69.2 | 2 | 4 |
| 2060 | 24 | 72 | 63.5 | 63.5 | 2 | 5 |
| 2620 | 30 | 24 | 70.0 | 100.0 | 2 | 2 |
| 2630 | 30 | 36 | 70.0 | 100.0 | 2 | 3 |
| 2640 | 30 | 48 | 70.0 | 70.5 | 2 | 3 |
| 2650 | 30 | 60 | 49.8 | 49.8 | 2 | 4 |
| 2660 | 30 | 72 | 39.9 | 39.9 | 2 | 5 |
| 2820 | 32 | 24 | 70.0 | 100.0 | 2 | 2 |
| 2830 | 32 | 36 | 70.0 | 98.7 | 2 | 3 |
| 2840 | 32 | 48 | 69.5 | 69.5 | 2 | 3 |
| 2850 | 32 | 60 | 49.4 | 49.4 | 2 | 4 |
| 2860 | 32 | 72 | 37.4 | 37.4 | 2 | 5 |
| 3020 | 36 | 24 | 70.0 | 100.0 | 2 | 2 |
| 3030 | 36 | 36 | 70.0 | 90.4 | 2 | 3 |
| 3040 | 36 | 48 | 66.6 | 66.6 | 2 | 3 |
| 3050 | 36 | 60 | 49.4 | 49.4 | 2 | 4 |
| 3060 | 36 | 72 | 37.2 | 37.2 | 2 | 5 |

THOMAS J. SOTOS
PROFESSIONAL ENGINEER
FL LIC. # 35225

[Signature]

DATE _____

Revision Notes:

Drawn By: N. ERAZO Date Drawn: 10/27/07

Revised By: Date Revised:

Revision Level: Scale:

Approved as complying with the
Miami Building Code
Date JUNE 12, 2008
NGAR 07-1218-08
Miami-Dade Product Control
[Signature]

LAWSON
INDUSTRIES, INC.

8501 N.W. 90 ST.
MEDLEY, FLORIDA 33166
PH No. (305) 696-8660

MANUFACTURER OF QUALITY ALUMINUM WINDOWS AND GLASS DOORS

| | | | | | |
|---|----------------------|--------------------------------|------------------------------------|-------------------------------|-------------|
| Draw Class: NOA | Part Class: DP CHART | Prod Category: WINDOW | Series/Model: 3000 | Item Reference #: L3000-07-01 | Revision #: |
| Series: 3000 Outswing Casement Window | | | DESIGN LOAD TABLES FOR "X" WINDOWS | | |
| Product Reference Number: CASEMENT3000-07NOA-01 | | Drawing Number: L3000-0701.001 | | Sheet: 8 OF 10 | |

| 3000 Non Impact Casement Window Flange Frame with 3/16" Annealed Glass Configuration: "XX", "XO" or "OX" | | | | | | |
|--|------------|-------------|-----------|-----------|-----------|------|
| Size Code | Width (in) | Height (in) | DP(+) psf | DP(-) psf | Anchors | |
| | | | | | Head/Sill | Jamb |
| 22 | 37 | 26 | 70.0 | 100.0 | 4 | 2 |
| 23 | 37 | 38.375 | 70.0 | 100.0 | 4 | 3 |
| 24 | 37 | 50.625 | 70.0 | 100.0 | 4 | 4 |
| 25 | 37 | 63 | 70.0 | 87.8 | 4 | 4 |
| 32 | 53.125 | 26 | 70.0 | 100.0 | 6 | 2 |
| 33 | 53.125 | 38.375 | 70.0 | 100.0 | 6 | 3 |
| 34 | 53.125 | 50.625 | 70.0 | 77.7 | 6 | 4 |
| 35 | 53.125 | 63 | 66.1 | 66.1 | 6 | 4 |
| D22 | 74 | 26 | 70.0 | 100.0 | 6 | 2 |
| D23 | 74 | 38.375 | 70.0 | 73.9 | 6 | 3 |
| D24 | 74 | 50.625 | 52.5 | 52.5 | 6 | 4 |
| D25 | 74 | 63 | 40.2 | 40.2 | 6 | 4 |
| 4020 | 48 | 24 | 70.0 | 100.0 | 4 | 2 |
| 4030 | 48 | 36 | 70.0 | 100.0 | 4 | 3 |
| 4040 | 48 | 48 | 70.0 | 99.4 | 4 | 4 |
| 4050 | 48 | 60 | 70.0 | 75.8 | 4 | 4 |
| 5020 | 60 | 24 | 70.0 | 100.0 | 6 | 2 |
| 5030 | 60 | 36 | 70.0 | 97.1 | 6 | 3 |
| 5040 | 60 | 48 | 68.1 | 68.1 | 6 | 4 |
| 5050 | 60 | 60 | 53.4 | 53.4 | 6 | 4 |
| 6020 | 72 | 24 | 70.0 | 100.0 | 6 | 2 |
| 6030 | 72 | 36 | 70.0 | 80.6 | 6 | 3 |
| 6040 | 72 | 48 | 57.6 | 57.6 | 6 | 4 |
| 6050 | 72 | 60 | 43.3 | 43.3 | 6 | 4 |

| 3000 Non Impact Casement Window Flange Frame with 1/4" Annealed Glass Configuration: "XX", "XO" or "OX" | | | | | | |
|---|------------|-------------|-----------|-----------|-----------|------|
| Size Code | Width (in) | Height (in) | DP(+) psf | DP(-) psf | Anchors | |
| | | | | | Head/Sill | Jamb |
| 22 | 37 | 26 | 70.0 | 100.0 | 4 | 2 |
| 23 | 37 | 38.375 | 70.0 | 100.0 | 4 | 3 |
| 24 | 37 | 50.625 | 70.0 | 100.0 | 4 | 4 |
| 25 | 37 | 63 | 70.0 | 100.0 | 4 | 4 |
| 32 | 53.125 | 26 | 70.0 | 100.0 | 6 | 2 |
| 33 | 53.125 | 38.375 | 70.0 | 100.0 | 6 | 3 |
| 34 | 53.125 | 50.625 | 70.0 | 100.0 | 6 | 4 |
| 35 | 53.125 | 63 | 70.0 | 84.8 | 6 | 4 |
| D22 | 74 | 26 | 70.0 | 100.0 | 6 | 2 |
| D23 | 74 | 38.375 | 70.0 | 96.0 | 6 | 3 |
| D24 | 74 | 50.625 | 69.1 | 69.1 | 6 | 4 |
| D25 | 74 | 63 | 52.7 | 52.7 | 6 | 4 |
| 4020 | 48 | 24 | 70.0 | 100.0 | 4 | 2 |
| 4030 | 48 | 36 | 70.0 | 100.0 | 4 | 3 |
| 4040 | 48 | 48 | 70.0 | 100.0 | 4 | 4 |
| 4050 | 48 | 60 | 70.0 | 97.2 | 4 | 4 |
| 5020 | 60 | 24 | 70.0 | 100.0 | 6 | 2 |
| 5030 | 60 | 36 | 70.0 | 100.0 | 6 | 3 |
| 5040 | 60 | 48 | 70.0 | 94.7 | 6 | 4 |
| 5050 | 60 | 60 | 70.0 | 77.8 | 6 | 4 |
| 6020 | 72 | 24 | 70.0 | 100.0 | 6 | 2 |
| 6030 | 72 | 36 | 70.0 | 100.0 | 6 | 3 |
| 6040 | 72 | 48 | 70.0 | 75.6 | 6 | 4 |
| 6050 | 72 | 60 | 57.4 | 57.4 | 6 | 4 |

| 3000 Non Impact Casement Window Flange Frame with 3/16" Tempered Glass Configuration: "XX", "XO" or "OX" | | | | | | |
|--|------------|-------------|-----------|-----------|-----------|------|
| Size Code | Width (in) | Height (in) | DP(+) psf | DP(-) psf | Anchors | |
| | | | | | Head/Sill | Jamb |
| 22 | 37 | 26 | 70.0 | 100.0 | 4 | 2 |
| 23 | 37 | 38.375 | 70.0 | 100.0 | 4 | 3 |
| 24 | 37 | 50.625 | 70.0 | 100.0 | 4 | 4 |
| 25 | 37 | 63 | 70.0 | 100.0 | 4 | 4 |
| 32 | 53.125 | 26 | 70.0 | 100.0 | 6 | 2 |
| 33 | 53.125 | 38.375 | 70.0 | 100.0 | 6 | 3 |
| 34 | 53.125 | 50.625 | 70.0 | 100.0 | 6 | 4 |
| 35 | 53.125 | 63 | 70.0 | 100.0 | 6 | 4 |
| D22 | 74 | 26 | 70.0 | 100.0 | 6 | 2 |
| D23 | 74 | 38.375 | 70.0 | 100.0 | 6 | 3 |
| D24 | 74 | 50.625 | 70.0 | 100.0 | 6 | 4 |
| D25 | 74 | 63 | 70.0 | 83.1 | 6 | 4 |
| 4020 | 48 | 24 | 70.0 | 100.0 | 4 | 2 |
| 4030 | 48 | 36 | 70.0 | 100.0 | 4 | 3 |
| 4040 | 48 | 48 | 70.0 | 100.0 | 4 | 4 |
| 4050 | 48 | 60 | 70.0 | 100.0 | 4 | 4 |
| 5020 | 60 | 24 | 70.0 | 100.0 | 6 | 2 |
| 5030 | 60 | 36 | 70.0 | 100.0 | 6 | 3 |
| 5040 | 60 | 48 | 70.0 | 100.0 | 6 | 4 |
| 5050 | 60 | 60 | 70.0 | 100.0 | 6 | 4 |
| 6020 | 72 | 24 | 70.0 | 100.0 | 6 | 2 |
| 6030 | 72 | 36 | 70.0 | 100.0 | 6 | 3 |
| 6040 | 72 | 48 | 70.0 | 100.0 | 6 | 4 |
| 6050 | 72 | 60 | 70.0 | 90.5 | 6 | 4 |

| 3000 Non Impact Casement Window Flange Frame with 1/2" Annealed Insulated Glass Configuration: "XX", "XO" or "OX" | | | | | | |
|---|------------|-------------|-----------|-----------|-----------|------|
| Size Code | Width (in) | Height (in) | DP(+) psf | DP(-) psf | Anchors | |
| | | | | | Head/Sill | Jamb |
| 22 | 37 | 26 | 70.0 | 100.0 | 4 | 2 |
| 23 | 37 | 38.375 | 70.0 | 100.0 | 4 | 3 |
| 24 | 37 | 50.625 | 70.0 | 91.6 | 4 | 4 |
| 25 | 37 | 63 | 70.0 | 70.5 | 4 | 4 |
| 32 | 53.125 | 26 | 70.0 | 100.0 | 6 | 2 |
| 33 | 53.125 | 38.375 | 70.0 | 99.4 | 6 | 3 |
| 34 | 53.125 | 50.625 | 67.8 | 67.8 | 6 | 4 |
| 35 | 53.125 | 63 | 52.1 | 52.1 | 6 | 4 |
| D22 | 74 | 26 | 70.0 | 100.0 | 6 | 2 |
| D23 | 74 | 38.375 | 70.0 | 81.9 | 6 | 3 |
| D24 | 74 | 50.625 | 59.0 | 59.0 | 6 | 4 |
| D25 | 74 | 63 | 42.6 | 42.6 | 6 | 4 |
| 4020 | 48 | 24 | 70.0 | 100.0 | 4 | 2 |
| 4030 | 48 | 36 | 70.0 | 100.0 | 4 | 3 |
| 4040 | 48 | 48 | 70.0 | 79.2 | 4 | 4 |
| 4050 | 48 | 60 | 60.9 | 60.9 | 4 | 4 |
| 5020 | 60 | 24 | 70.0 | 100.0 | 6 | 2 |
| 5030 | 60 | 36 | 70.0 | 100.0 | 6 | 3 |
| 5040 | 60 | 48 | 70.0 | 70.3 | 6 | 4 |
| 5050 | 60 | 60 | 49.4 | 49.4 | 6 | 4 |
| 6020 | 72 | 24 | 70.0 | 100.0 | 6 | 2 |
| 6030 | 72 | 36 | 70.0 | 89.2 | 6 | 3 |
| 6040 | 72 | 48 | 64.9 | 64.9 | 6 | 4 |
| 6050 | 72 | 60 | 46.4 | 46.4 | 6 | 4 |

THOMAS A. SOTOS
PROFESSIONAL ENGINEER
FL LIC. # 55225

[Signature]

DATE _____

Revision Notes:

Drawn By: N. ERAZO Date Drawn: 10/27/07

Revised By: Date Revised:

Revision Level: Scale:

LAWSON INDUSTRIES, INC.

8501 N.W. 90 ST.
MEDLEY, FLORIDA 33166
PH No. (305) 696-8660

MANUFACTURER OF QUALITY ALUMINUM WINDOWS AND GLASS DOORS

Draw Class: NOA Part Class: DP CHART Prod Category: WINDOW Series/Model: 3000 Item Reference #: LCN0A 07-01 Revision #: _____

Series: 3000 Outswing Casement Window
DESIGN LOAD TABLES FOR "XX", "XO" OR "OX" WINDOWS

Product Reference Number: CASEMENT3000-07NOA-01 Drawing Number: L3000-0701.001 Sheet: 7 OF 10

Approved as complying with the Florida Building Code
Date: JUNE 12, 2008
NDA# 07-1218-05
Manual Perez

| 3000 Non Impact Casement Window Flange Frame with 3/16" Annealed Glass Configuration: "XOX" | | | | | | |
|---|------------|-------------|------------|------------|-----------|------|
| Size Code | Width (in) | Height (in) | DP (+) psf | DP (-) psf | Anchors | |
| | | | | | Head/Sill | Jamb |
| D22 | 74 | 26 | 70.0 | 100.0 | 8 | 2 |
| D23 | 74 | 38.375 | 70.0 | 73.1 | 8 | 3 |
| D24 | 74 | 50.625 | 52.1 | 52.1 | 8 | 4 |
| D25 | 74 | 63 | 39.9 | 39.9 | 8 | 4 |
| D32 | 106.375 | 26 | 70.0 | 80.1 | 10 | 2 |
| D33 | 106.375 | 38.375 | 48.1 | 48.1 | 10 | 3 |
| D34 | 106.375 | 50.625 | 41.0 | 41.0 | 10 | 4 |
| D35 | 106.375 | 63 | 34.2 | 34.2 | 10 | 4 |
| T22 | 111 | 26 | 70.0 | 78.2 | 12 | 2 |
| T23 | 111 | 38.375 | 45.7 | 45.7 | 12 | 3 |
| T24 | 111 | 50.625 | 39.7 | 39.7 | 12 | 4 |
| T25 | 111 | 63 | 33.1 | 33.1 | 12 | 4 |
| M2 | 120 | 26 | 70.0 | 75.0 | 12 | 2 |
| M3 | 120 | 38.375 | 41.1 | 41.1 | 12 | 3 |
| M4 | 120 | 50.625 | 37.2 | 37.2 | 12 | 4 |
| M5 | 120 | 63 | 31.0 | 31.0 | 12 | 4 |
| 6020 | 72 | 24 | 70.0 | 100.0 | 8 | 2 |
| 6030 | 72 | 36 | 70.0 | 79.5 | 8 | 3 |
| 6040 | 72 | 48 | 57.0 | 57.0 | 8 | 4 |
| 6050 | 72 | 60 | 42.8 | 42.8 | 8 | 4 |
| 7020 | 84 | 24 | 70.0 | 100.0 | 10 | 2 |
| 7030 | 84 | 36 | 66.9 | 66.9 | 10 | 3 |
| 7040 | 84 | 48 | 51.4 | 51.4 | 10 | 4 |
| 7050 | 84 | 60 | 40.3 | 40.3 | 10 | 4 |
| 8020 | 96 | 24 | 70.0 | 100.0 | 10 | 2 |
| 8030 | 96 | 36 | 56.6 | 56.6 | 10 | 3 |
| 8040 | 96 | 48 | 47.2 | 47.2 | 10 | 4 |
| 8050 | 96 | 60 | 38.5 | 38.5 | 10 | 4 |
| 9020 | 108 | 24 | 70.0 | 96.0 | 10 | 2 |
| 9030 | 108 | 36 | 49.1 | 49.1 | 10 | 3 |
| 9040 | 108 | 48 | 41.8 | 41.8 | 10 | 4 |
| 9050 | 108 | 60 | 35.5 | 35.5 | 10 | 4 |

| 3000 Non Impact Casement Window Flange Frame with 1/4" Annealed Glass Configuration: "XOX" | | | | | | |
|--|------------|-------------|------------|------------|-----------|------|
| Size Code | Width (in) | Height (in) | DP (+) psf | DP (-) psf | Anchors | |
| | | | | | Head/Sill | Jamb |
| D22 | 74 | 26 | 70.0 | 100.0 | 8 | 2 |
| D23 | 74 | 38.375 | 70.0 | 94.8 | 8 | 3 |
| D24 | 74 | 50.625 | 68.2 | 68.2 | 8 | 4 |
| D25 | 74 | 63 | 52.0 | 52.0 | 8 | 4 |
| D32 | 106.375 | 26 | 70.0 | 100.0 | 10 | 2 |
| D33 | 106.375 | 38.375 | 61.6 | 61.6 | 10 | 3 |
| D34 | 106.375 | 50.625 | 50.2 | 50.2 | 10 | 4 |
| D35 | 106.375 | 63 | 41.3 | 41.3 | 10 | 4 |
| T22 | 111 | 26 | 70.0 | 100.0 | 12 | 2 |
| T23 | 111 | 38.375 | 58.6 | 58.6 | 12 | 3 |
| T24 | 111 | 50.625 | 48.3 | 48.3 | 12 | 4 |
| T25 | 111 | 63 | 40.4 | 40.4 | 12 | 4 |
| M2 | 120 | 26 | 70.0 | 100.0 | 12 | 2 |
| M3 | 120 | 38.375 | 53.4 | 53.4 | 12 | 3 |
| M4 | 120 | 50.625 | 44.9 | 44.9 | 12 | 4 |
| M5 | 120 | 63 | 38.6 | 38.6 | 12 | 4 |
| 6020 | 72 | 24 | 70.0 | 100.0 | 8 | 2 |
| 6030 | 72 | 36 | 70.0 | 100.0 | 8 | 3 |
| 6040 | 72 | 48 | 70.0 | 74.7 | 8 | 4 |
| 6050 | 72 | 60 | 56.5 | 56.5 | 8 | 4 |
| 7020 | 84 | 24 | 70.0 | 100.0 | 10 | 2 |
| 7030 | 84 | 36 | 70.0 | 87.1 | 10 | 3 |
| 7040 | 84 | 48 | 64.2 | 64.2 | 10 | 4 |
| 7050 | 84 | 60 | 49.9 | 49.9 | 10 | 4 |
| 8020 | 96 | 24 | 70.0 | 100.0 | 10 | 2 |
| 8030 | 96 | 36 | 70.0 | 74.6 | 10 | 3 |
| 8040 | 96 | 48 | 57.8 | 57.8 | 10 | 4 |
| 8050 | 96 | 60 | 46.5 | 46.5 | 10 | 4 |
| 9020 | 108 | 24 | 70.0 | 100.0 | 10 | 2 |
| 9030 | 108 | 36 | 63.9 | 63.9 | 10 | 3 |
| 9040 | 108 | 48 | 51.0 | 51.0 | 10 | 4 |
| 9050 | 108 | 60 | 42.9 | 42.9 | 10 | 4 |

| 3000 Non Impact Casement Window Flange Frame with 3/16" Tempered Glass Configuration: "XOX" | | | | | | |
|---|------------|-------------|------------|------------|-----------|------|
| Size Code | Width (in) | Height (in) | DP (+) psf | DP (-) psf | Anchors | |
| | | | | | Head/Sill | Jamb |
| D22 | 74 | 26 | 70.0 | 100.0 | 8 | 2 |
| D23 | 74 | 38.375 | 70.0 | 100.0 | 8 | 3 |
| D24 | 74 | 50.625 | 70.0 | 100.0 | 8 | 4 |
| D25 | 74 | 63 | 70.0 | 100.0 | 8 | 4 |
| D32 | 106.375 | 26 | 70.0 | 100.0 | 10 | 2 |
| D33 | 106.375 | 38.375 | 70.0 | 100.0 | 10 | 3 |
| D34 | 106.375 | 50.625 | 70.0 | 100.0 | 10 | 4 |
| D35 | 106.375 | 63 | 70.0 | 84.0 | 10 | 4 |
| T22 | 111 | 26 | 70.0 | 100.0 | 12 | 2 |
| T23 | 111 | 38.375 | 70.0 | 100.0 | 12 | 3 |
| T24 | 111 | 50.625 | 70.0 | 100.0 | 12 | 4 |
| T25 | 111 | 63 | 70.0 | 82.4 | 12 | 4 |
| M2 | 120 | 26 | 70.0 | 100.0 | 12 | 2 |
| M3 | 120 | 38.375 | 70.0 | 100.0 | 12 | 3 |
| M4 | 120 | 50.625 | 70.0 | 100.0 | 12 | 4 |
| M5 | 120 | 63 | 70.0 | 80.0 | 12 | 4 |
| 6020 | 72 | 24 | 70.0 | 100.0 | 8 | 2 |
| 6030 | 72 | 36 | 70.0 | 100.0 | 8 | 3 |
| 6040 | 72 | 48 | 70.0 | 100.0 | 8 | 4 |
| 6050 | 72 | 60 | 70.0 | 100.0 | 8 | 4 |
| 7020 | 84 | 24 | 70.0 | 100.0 | 10 | 2 |
| 7030 | 84 | 36 | 70.0 | 100.0 | 10 | 3 |
| 7040 | 84 | 48 | 70.0 | 100.0 | 10 | 4 |
| 7050 | 84 | 60 | 70.0 | 100.0 | 10 | 4 |
| 8020 | 96 | 24 | 70.0 | 100.0 | 10 | 2 |
| 8030 | 96 | 36 | 70.0 | 100.0 | 10 | 3 |
| 8040 | 96 | 48 | 70.0 | 100.0 | 10 | 4 |
| 8050 | 96 | 60 | 70.0 | 95.0 | 10 | 4 |
| 9020 | 108 | 24 | 70.0 | 100.0 | 10 | 2 |
| 9030 | 108 | 36 | 70.0 | 100.0 | 10 | 3 |
| 9040 | 108 | 48 | 70.0 | 100.0 | 10 | 4 |
| 9050 | 108 | 60 | 70.0 | 90.1 | 10 | 4 |

| 3000 Non Impact Casement Window Flange Frame with 1/2" Annealed Insulated Glass Configuration: "XOX" | | | | | | |
|--|------------|-------------|------------|------------|-----------|------|
| Size Code | Width (in) | Height (in) | DP (+) psf | DP (-) psf | Anchors | |
| | | | | | Head/Sill | Jamb |
| D22 | 74 | 26 | 70.0 | 100.0 | 8 | 2 |
| D23 | 74 | 38.375 | 70.0 | 81.0 | 8 | 3 |
| D24 | 74 | 50.625 | 60.5 | 60.5 | 8 | 4 |
| D25 | 74 | 63 | 45.8 | 45.8 | 8 | 4 |
| D32 | 106.375 | 26 | 64.4 | 64.4 | 10 | 2 |
| D33 | 106.375 | 38.375 | 55.5 | 55.5 | 10 | 3 |
| D34 | 106.375 | 50.625 | 43.7 | 43.7 | 10 | 4 |
| D35 | 106.375 | 63 | 35.2 | 35.2 | 10 | 4 |
| T22 | 111 | 26 | 61.8 | 61.8 | 12 | 2 |
| T23 | 111 | 38.375 | 52.6 | 52.6 | 12 | 3 |
| T24 | 111 | 50.625 | 41.9 | 41.9 | 12 | 4 |
| T25 | 111 | 63 | 33.8 | 33.8 | 12 | 4 |
| M2 | 120 | 26 | 57.3 | 57.3 | 12 | 2 |
| M3 | 120 | 38.375 | 47.7 | 47.7 | 12 | 3 |
| M4 | 120 | 50.625 | 38.7 | 38.7 | 12 | 4 |
| M5 | 120 | 63 | 31.2 | 31.2 | 12 | 4 |
| 6020 | 72 | 24 | 70.0 | 100.0 | 8 | 2 |
| 6030 | 72 | 36 | 70.0 | 87.9 | 8 | 3 |
| 6040 | 72 | 48 | 65.5 | 65.5 | 8 | 4 |
| 6050 | 72 | 60 | 49.4 | 49.4 | 8 | 4 |
| 7020 | 84 | 24 | 70.0 | 91.6 | 10 | 2 |
| 7030 | 84 | 36 | 70.0 | 75.0 | 10 | 3 |
| 7040 | 84 | 48 | 57.6 | 57.6 | 10 | 4 |
| 7050 | 84 | 60 | 45.9 | 45.9 | 10 | 4 |
| 8020 | 96 | 24 | 70.0 | 79.9 | 10 | 2 |
| 8030 | 96 | 36 | 65.1 | 65.1 | 10 | 3 |
| 8040 | 96 | 48 | 50.9 | 50.9 | 10 | 4 |
| 8050 | 96 | 60 | 40.9 | 40.9 | 10 | 4 |
| 9020 | 108 | 24 | 70.0 | 72.8 | 10 | 2 |
| 9030 | 108 | 36 | 55.4 | 55.4 | 10 | 3 |
| 9040 | 108 | 48 | 45.3 | 45.3 | 10 | 4 |
| 9050 | 108 | 60 | 36.2 | 36.2 | 10 | 4 |

Approved as complying with the Florida Building Code
 Date JUNE 12, 2008
 NOA# 07-1218-08
 Insulated Glass Product Control
 By Maureen Puz

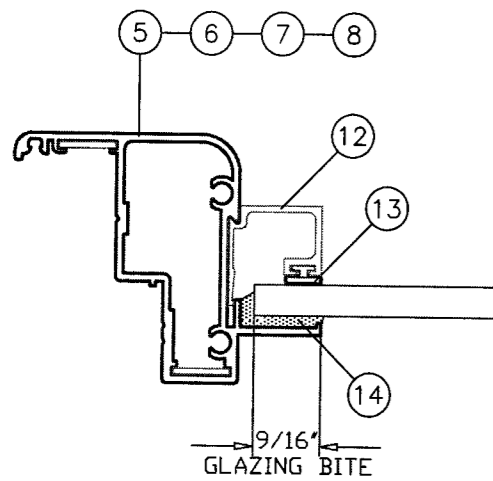
| | | | | | | | | | | | | | | | | | | | | | | | | | | |
|--|--|--|--------------------------------|-------------------------------|-----------------------|--------------------|-------------------------------|-------------|---------------------------------------|--|--|--|--|--|---|--|--|--|--|--|---|--|--|--------------------------------|--|----------------|
| <p>THOMAS J. SOTOS PROFESSIONAL ENGINEER E. LIC. # 55225</p> <p>DATE _____</p> | <p>Revision Notes:</p> <hr/> <hr/> | <p>LAWSON INDUSTRIES, INC.</p> <p>MANUFACTURER OF QUALITY ALUMINUM WINDOWS AND GLASS DOORS</p> <p>8501 N.W. 90 ST. MEDLEY, FLORIDA 33166 PH No. (305) 696-8660</p> | | | | | | | | | | | | | | | | | | | | | | | | |
| <p>Drawn By: N. ERAZO</p> <p>Revised By:</p> <p>Revision Level:</p> | <p>Date Drawn: 10/27/07</p> <p>Date Revised:</p> <p>Scale:</p> | <table border="1" style="width: 100%; border-collapse: collapse;"> <tr> <td>Draw Class: NOA</td> <td>Part Class: DP CHART</td> <td>Prod Category: WINDOW</td> <td>Series/Model: 3000</td> <td>Item Reference #: LCNOA 07-01</td> <td>Revision #:</td> </tr> <tr> <td colspan="6" style="text-align: center;">Series: 3000 Outswing Casement Window</td> </tr> <tr> <td colspan="6" style="text-align: center;">DESIGN LOAD TABLES FOR "XOX", "XO" UN-EQUAL & "XOX" EQUAL</td> </tr> <tr> <td colspan="3">Product Reference Number: CASEMENT3000-07NOA-01</td> <td colspan="2">Drawing Number: L3000-0701.001</td> <td>Sheet: 8 OF 10</td> </tr> </table> | Draw Class: NOA | Part Class: DP CHART | Prod Category: WINDOW | Series/Model: 3000 | Item Reference #: LCNOA 07-01 | Revision #: | Series: 3000 Outswing Casement Window | | | | | | DESIGN LOAD TABLES FOR "XOX", "XO" UN-EQUAL & "XOX" EQUAL | | | | | | Product Reference Number: CASEMENT3000-07NOA-01 | | | Drawing Number: L3000-0701.001 | | Sheet: 8 OF 10 |
| Draw Class: NOA | Part Class: DP CHART | Prod Category: WINDOW | Series/Model: 3000 | Item Reference #: LCNOA 07-01 | Revision #: | | | | | | | | | | | | | | | | | | | | | |
| Series: 3000 Outswing Casement Window | | | | | | | | | | | | | | | | | | | | | | | | | | |
| DESIGN LOAD TABLES FOR "XOX", "XO" UN-EQUAL & "XOX" EQUAL | | | | | | | | | | | | | | | | | | | | | | | | | | |
| Product Reference Number: CASEMENT3000-07NOA-01 | | | Drawing Number: L3000-0701.001 | | Sheet: 8 OF 10 | | | | | | | | | | | | | | | | | | | | | |

LAWSON SERIES: 3000 CASEMENT (NON-IMPACT) WINDOW - BILL OF MATERIALS LIST

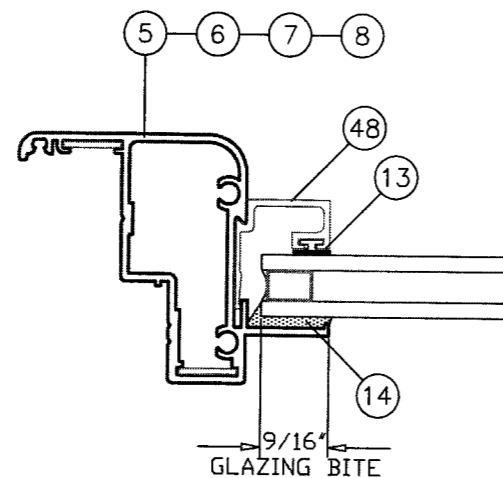
| ITEM # | DWG. NO. | PART NO. | PART NO. | QUANTITY | DESCRIPTION | REMARKS |
|--------|------------|----------|----------|---------------|--------------------------------|--------------------------|
| 1 | L-3001 | | - | 1 | FRAME HEAD | 6063-T6 ALUMINUM |
| 2 | L-3002 | | - | 1 | FRAME SILL | 6063-T6 ALUMINUM |
| 3 | L-3002 | | - | 2 | FRAME JAMB-HINGE SIDE | 6063-T6 ALUMINUM |
| 4 | L-3002 | | - | 2 | FRAME JAMB-LATCH SIDE | 6063-T6 ALUMINUM |
| 5 | L-3004 | | - | 1 X VENT/LITE | VENT TOP RAIL | 6063-T6 ALUMINUM |
| 6 | L-3004 | | - | 1 X VENT/LITE | VENT BOTTOM RAIL | 6063-T6 ALUMINUM |
| 7 | L-3004 | | - | 1 X VENT/LITE | VENT SIDE RAIL-HINGE SIDE | 6063-T6 ALUMINUM |
| 8 | L-3004 | | - | 1 X VENT/LITE | VENT SIDE RAIL-LATCH SIDE | 6063-T6 ALUMINUM |
| 9 | L-3003 | | - | AS REQ'D. | IN-POST | 6063-T6 ALUMINUM |
| 10 | L-3006 | | - | 1 X ANCHOR | FRAME SILL ANCHOR CLIP | 6063-T6 ALUMINUM (3" L.) |
| 11 | L-3005 | | - | AS REQ'D. | FIXED LITE MOUNTING BRACKET | 6063-T6 ALUMINUM (3" L.) |
| 12 | L-3010 | | - | AS REQ'D. | GLAZING BEAD - 3/16" & 1/4" | 6063-T5 ALUMINUM |
| 13 | L-7531 | | - | AS REQ'D. | GLAZING BEAD BULB VINYL | PVC VINYL |
| 14 | SM-5731 | | - | AS REQ'D. | GLAZING SEALANT - SILICONE | |
| 15 | L-3012 | | - | AS REQ'D. | OUTER WEATHERSTRIPPING - VENT | PVC VINYL |
| 16 | L-3012 | | - | AS REQ'D. | INNER WEATHERSTRIPPING - FRAME | PVC VINYL |
| 17 | L-3013 | PJS40-SS | - | 12 | CORNER KEY PER FRAME | |
| 18 | L-3013 | PJS40-SS | - | 8 | CORNER KEY PER VENT | |
| 19 | L-3013 | PJS40-SS | - | 4 X POST | CORNER KEY PER IN-POST | |
| 20 | - | - | - | 8 | FRAME ASSEMBLY SCREWS | #10 X 1" PH SMS |
| 21 | - | - | - | 8 | VENT ASSEMBLY SCREWS | #10 X 1 1/4" PH SMS |
| 22 | - | - | - | 2 X VENT | 4 BAR 90° HINGES - STD. & H.D. | |
| 23 | 222SS | 301SS | 304CJ200 | 2 X VENT | 4 BAR 45° HINGES - STD. & H.D. | |
| 24 | - | - | - | AS REQ'D. | HINGE MOUNTING SCREWS | #10 X 1/2" P.H./PHIL. B |
| 25 | 536 SERIES | 132626 | 132818 | 1 X VENT | VENT OPERATOR - DUAL or SINGLE | |

LAWSON SERIES: 3000 CASEMENT (NON-IMPACT) WINDOW - BILL OF MATERIALS LIST

| ITEM # | DWG. NO. | PART NO. | PART NO. | QUANTITY | DESCRIPTION | REMARKS |
|--------|----------|------------|------------|----------------|--------------------------------|---------------------------|
| 26 | - | - | - | 4/ OPER. | OPERATOR MOUNTING SCREWS | #10 X 3/4" F.H./PHIL. SDS |
| 27 | - | 30175 | C0314 | 1/ OPER. | STAINLESS STEEL "C" TRACK | TRUTH- ULTRA- |
| 28 | - | - | - | 2/ TRACK | TRACK MOUNTING SCREWS | #8 X 1/2" F.H./PHIL. SDS |
| 29 | - | 10558 | 10899 | 1/ OPERATOR | STUD BRACKET CONNECTOR | TRUTH- ULTRA- |
| 30 | - | - | - | 2/ BRACKET | STUD BRACKET SCREWS | #8 X 1/2" F.H./PHIL. SDS |
| 31 | - | 132-056S | 132-506 | 1/ VENT | LOCKING HANDLE | ULTRA |
| 32 | - | - | - | 2/ LOCK | LOCK HANDLE MOUNTING SCREWS | #10-32 X 3/8" PH MS |
| 33 | - | 119 SERIES | 032 SERIES | 1/ VENT | LOCKING MULTI-POINT BAR | TRUTH- ULTRA- SULLIVAN |
| 34 | - | 03144 | 20320 | 1 X LOCK POINT | TIE BAR NYLON GUIDES | ULTRA - SULLIVAN |
| 35 | - | - | - | 2 X GUIDE | NYLON GUIDES MOUNTING SCREWS | #8 X 1" PH./PHIL. B |
| 36 | - | C0885 RH | C0886 LH | 1/ LOCK | KEEPER (ST. STEEL) | ULTRA |
| 37 | - | - | - | 2/ KEEPER | KEEPER MOUNTING SCREWS | #6 X 3/8" PH SMS |
| 38 | L-3014 | - | - | 4 | SNUBBER | 6063-T5 ALUMINUM |
| 39 | - | - | - | 2/ SNUBBER | SNUBBER INSTALLATION SCREWS | #8 X 1/2" PH SMS |
| 40 | - | - | - | 2 X VENT | ANTI SAG VENT SILL RAMP | NYLON 6/6 |
| 41 | - | 23050 | C0483 | 1 X HANDLE | LOCKING HANDLE BACK PLATE | TRUTH- ULTRA- |
| 42 | - | - | - | 1 X VENT | 5/16" INSECT SCREEN - OPTIONAL | ALUMINUM FRAME |
| 43 | - | - | - | SEE ELEVATION | FRAME INSTALLATION SCREWS | #12 X 2 1/4" PH SMS |
| 44 | - | - | - | SEE ELEVATION | FRAME SILL CLIP SCREWS | #12 X 1 1/2" PH SMS |
| 45 | - | SM-5504 | - | SEE ELEVATION | FRAME/VENT ASSEMBLY SEALANT | Schnee-Morehead |
| 46 | - | - | - | SEE ELEVATION | FRAME INSTALLATION CAULKING | EXTERIOR GRADE PERIMETER |
| 47 | L-3007 | LII-164 | - | 1 X ANCHOR | FRAME HEAD/JAMB SHEAR PLATE | 6063-T5 ALUMINUM (3" L.) |
| 48 | L-3010 | - | - | AS REQ'D. | GLAZING BEAD - 1/2" | 6063-T5 ALUMINUM |
| 49 | - | - | - | 2 X BRACKET | FIXED VENT ATTACHMENT SCREW | #8 X 1 1/4" FH./PHIL. SDS |
| 50 | - | - | - | 8 X POST | IN-POST ASSEMBLY SCREWS | #10 X 1 1/4" PH SMS |

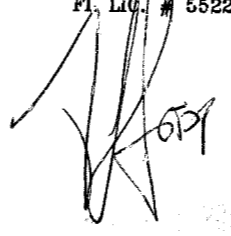



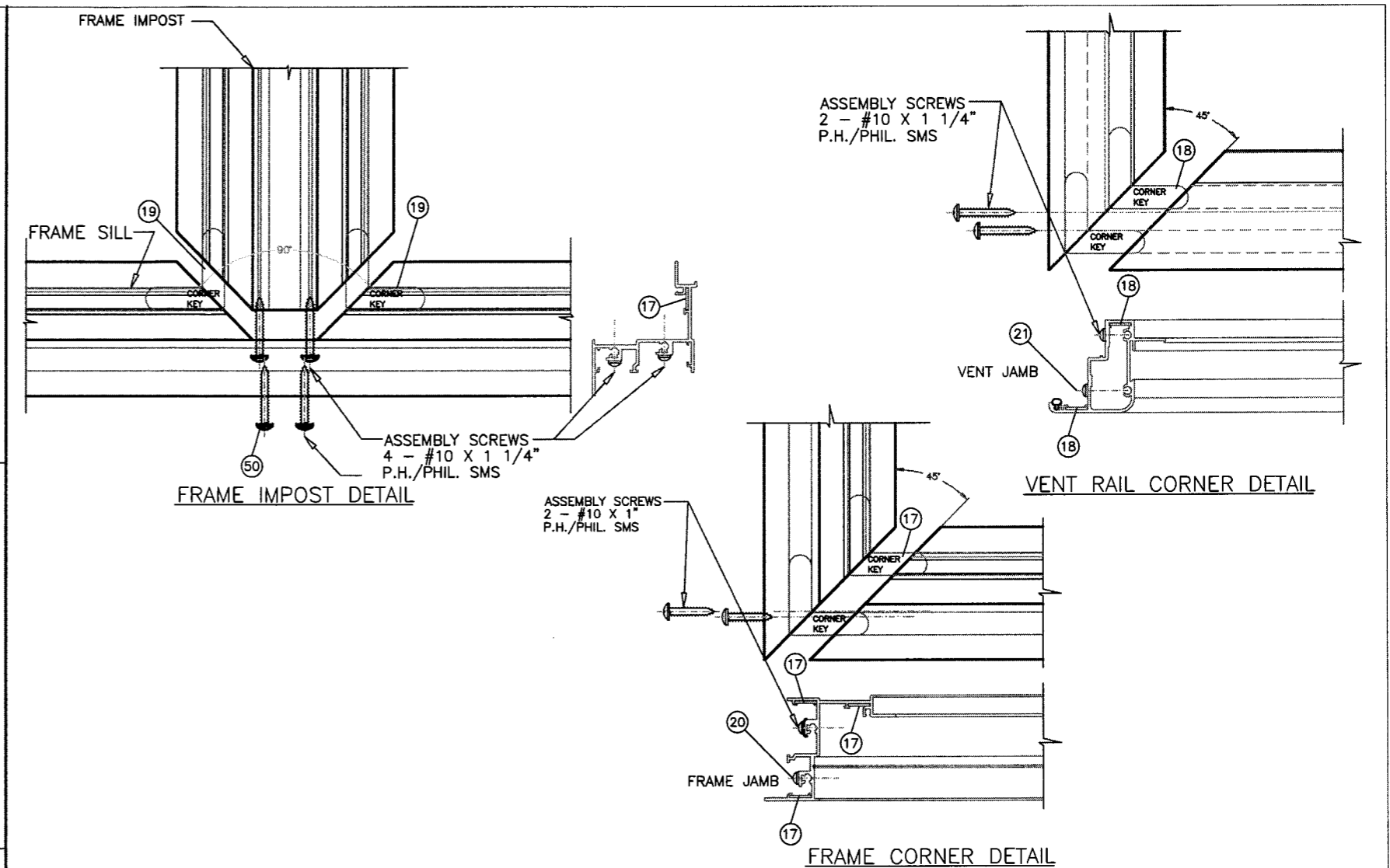
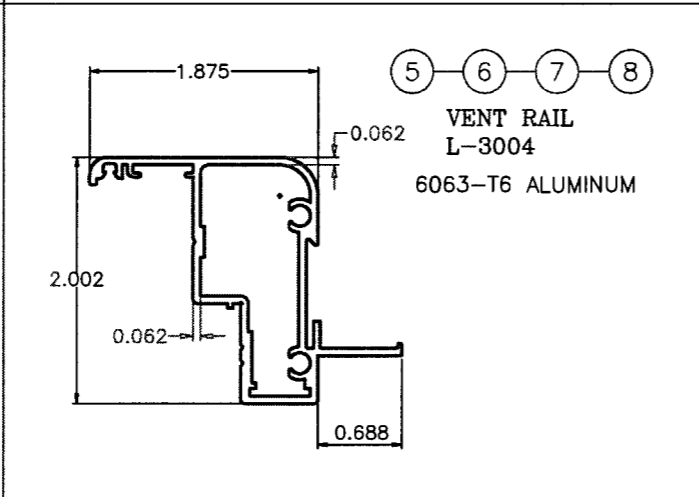
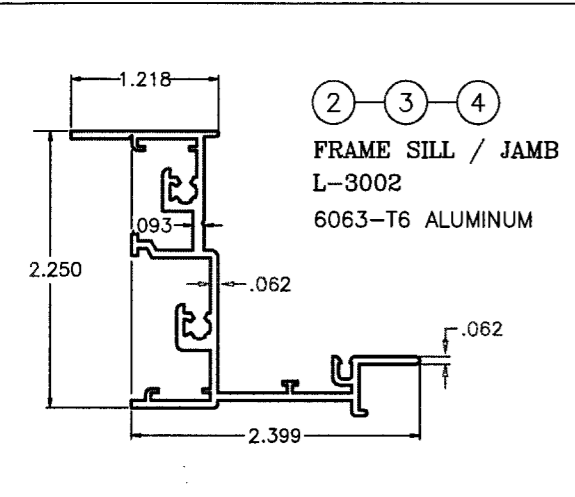
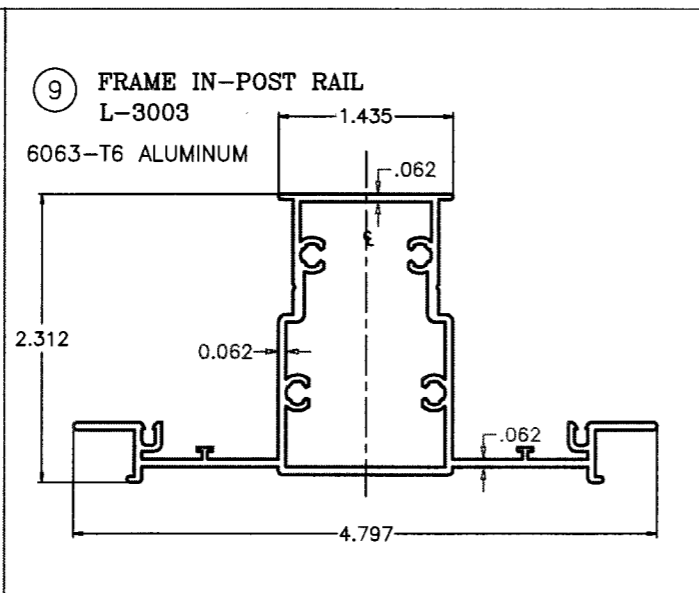
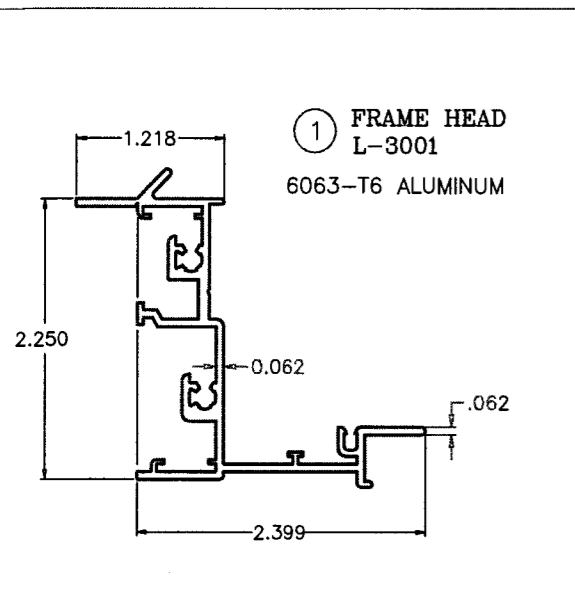
MONOLITHIC GLAZING DETAIL
3/16" & 1/4" Monolithic



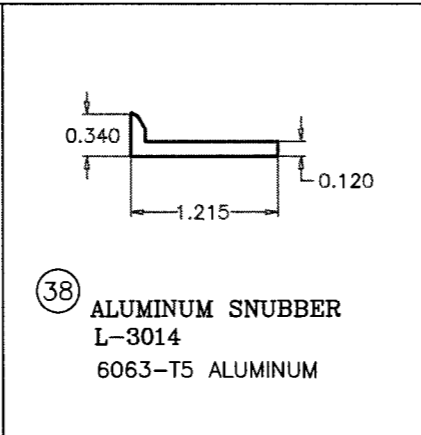
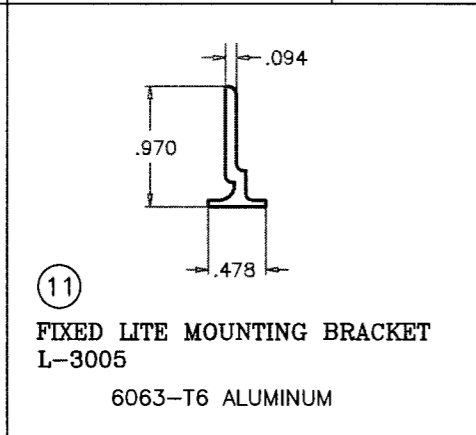
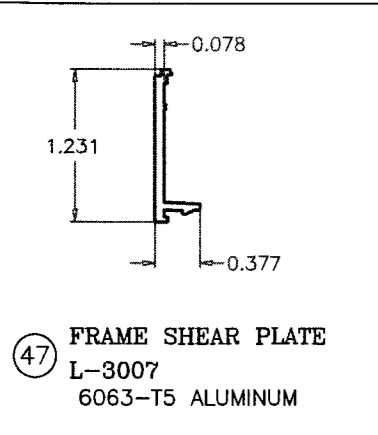
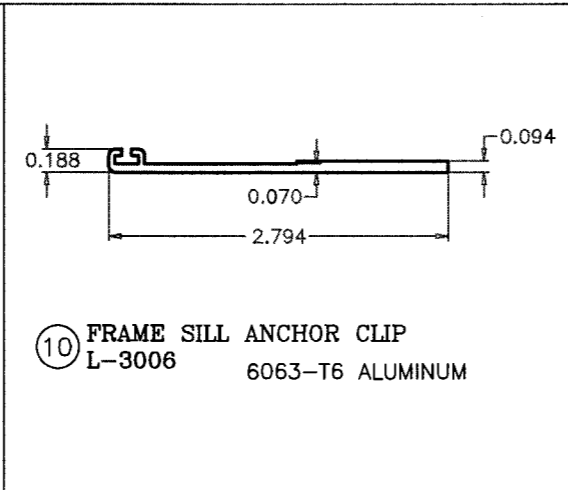
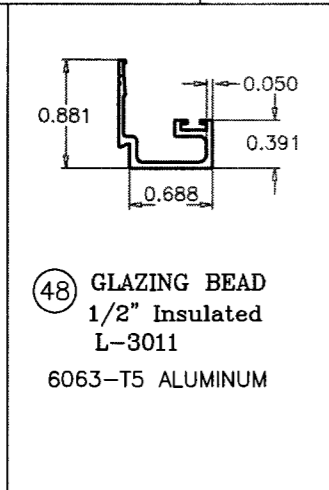
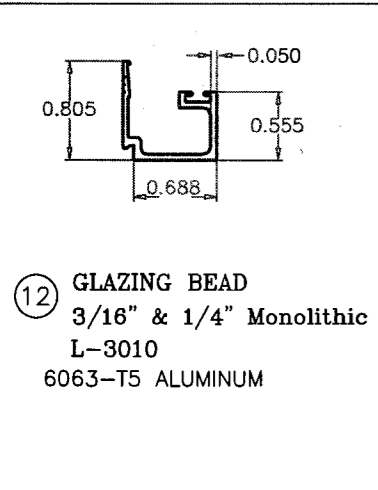
INSULATED GLAZING DETAIL
1/2" Insulated

Approved as complying with the Florida Building Code
Date: JUNE 12, 2008
NOA# 07-121B.08
Miami Code Product Control Division
By: *Manuel Pery*

| | | | | | | | |
|---|--------------------|--|---|---|--------------------------------|-------------------------------|-------------|
| THOMAS J. SOTOS PROFESSIONAL ENGINEER FL. LIC. # 55225  | Revision Notes: | |  8501 N.W. 90 ST. MEDLEY, FLORIDA 33166 PH No. (305) 696-8660 MANUFACTURER OF QUALITY ALUMINUM WINDOWS AND GLASS DOORS | | | | |
| | Drawn By: N. ERAZO | Date Drawn: 10/27/07 | | | | | |
| Revised By: | Date Revised: | Draw Class: NOA | Part Class: B.O.M. | Prod Category: WINDOW | Series/Model: 3000 | Item Reference #: LCN0A 07-01 | Revision #: |
| Revision Level: | Scale: | Series: 3000 Outswing Casement Window BILL OF MATERIALS & GLAZING DETAILS | | Product Reference Number: CASEMENT3000-07NOA-01 | Drawing Number: L3000-0701.001 | Sheet: 9 OF 10 | |



FRAME & SASH CORNER ASSEMBLY DETAILS



Approved as complying with the
Florida Building Code
Date: JUNE 12, 2008
NOA# 08-1218-DB
Miami Dade Product Control
Division
By: *Manuel Perez*

THOMAS J. SOTOS
PROFESSIONAL ENGINEER
FL LIC. # 55225

DATE

| | |
|-----------------|---------------|
| Revision Notes: | |
| Drawn By: | Date Drawn: |
| Revised By: | Date Revised: |
| Revision Level: | Scale: |
| N. ERAZO | 10/27/07 |
| | |
| | |

LAWSON
INDUSTRIES, INC.

8501 N.W. 90 ST.
MEDLEY, FLORIDA 33166
PH No. (305) 696-8660

MANUFACTURER OF QUALITY ALUMINUM WINDOWS AND GLASS DOORS

| | | | | | |
|-------------|-------------|----------------|---------------|-------------------|-------------|
| Draw Class: | Part Class: | Prod Category: | Series/Model: | Item Reference #: | Revision #: |
| NOA | | WINDOW | 3000 | LCNOA 07-01 | |

Series: 3000 Outswing Casement Window
EXTRUSION CROSS-SECTIONS, & ASSEMBLY DETAILS

| | | |
|---------------------------|-----------------|----------|
| Product Reference Number: | Drawing Number: | Sheet: |
| CASEMENT3000-07NOA-01 | L3000-0701.001 | 10 OF 10 |